

## Anti-RMND5A antibody

**Cat. No.** ml125416  
**Package** 25 µl/100 µl/200 µl  
**Storage** -20°C, pH7.4 PBS, 0.05% NaN<sub>3</sub>, 40% Glycerol

### Product overview

**Description** Anti-RMND5A rabbit polyclonal antibody  
**Applications** ELISA, IHC  
**Immunogen** Fusion protein of human RMND5A  
**Reactivity** Human, Mouse  
**Content** 0.6 mg/ml  
**Host species** Rabbit  
**Ig class** Immunogen-specific rabbit IgG  
**Purification** Antigen affinity purification

### Target information

**Symbol** RMND5A  
**Full name** required for meiotic nuclear division 5 homolog A  
**Synonyms** CTLH; GID2; RMD5; GID2A; p44CTLH  
**Swissprot** Q9H871

### Target Background

The function of this protein remains unknown.

订购热线: 4008-898-798

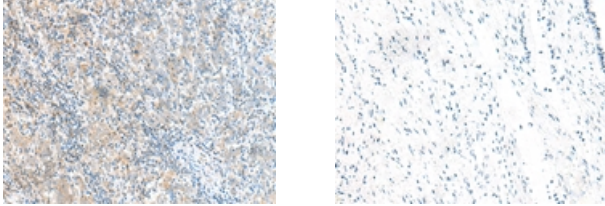
#### Applications

##### Immunohistochemistry

Predicted cell location: Cytoplasm

Positive control: Human cervical cancer

Recommended dilution: 20-100



The image on the left is immunohistochemistry of paraffin-embedded Human cervical cancer tissue using ml125416(RMND5A Antibody) at dilution 1/35, on the right is treated with fusion protein. (Original magnification: ×200)

##### ELISA

Recommended dilution: 5000-10000

联系电话: 4008-898-798, 021-61725725

联系QQ: 2881505695, 2881505696

邮箱: [mlbio\\_cn@yeah.net](mailto:mlbio_cn@yeah.net)

网址: [www.mlbio.cn](http://www.mlbio.cn)