

Anti-POLR1E antibody

Cat. No.	ml125423
Package	25 µl/100 µl/200 µl
Storage	-20°C, pH7.4 PBS, 0.05% NaN ₃ , 40% Glycerol

Product overview

Description	Anti-POLR1E rabbit polyclonal antibody
Applications	ELISA, IHC
Immunogen	Fusion protein of human POLR1E
Reactivity	Human
Content	0.72 mg/ml
Host species	Rabbit
Ig class	Immunogen-specific rabbit IgG
Purification	Antigen affinity purification

Target information

Symbol	POLR1E
Full name	RNA polymerase I subunit E
Synonyms	PAF53; PRAF1
Swissprot	Q9GZS1

Target Background

DNA-dependent RNA polymerase catalyzes the transcription of DNA into RNA using the four ribonucleoside triphosphates as substrates. Component of RNA polymerase I which synthesizes ribosomal RNA precursors. Appears to be involved in the formation of the initiation complex at the promoter by mediating the interaction between Pol I and UBTF/UBF (By similarity).

订购热线: 4008-898-798

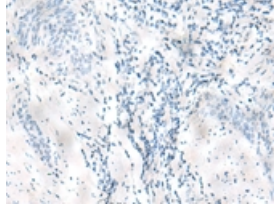
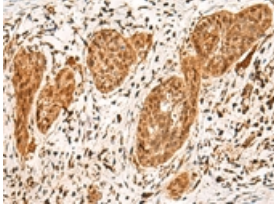
Applications

Immunohistochemistry

Predicted cell location: Nucleus

Positive control: Human esophagus cancer

Recommended dilution: 40-200

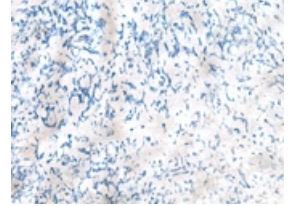
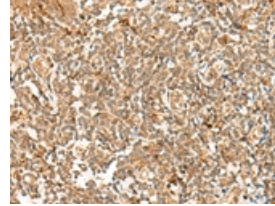


The image on the left is immunohistochemistry of paraffin-embedded Human esophagus cancer tissue using ml125423(POLR1E Antibody) at dilution 1/40, on the right is treated with fusion protein. (Original magnification: ×200)

Predicted cell location: Nucleus

Positive control: Human tonsil

Recommended dilution: 40-200



The image on the left is immunohistochemistry of paraffin-embedded Human tonsil tissue using ml125423(POLR1E Antibody) at dilution 1/40, on the right is treated with fusion protein. (Original magnification: ×200)

ELISA

Recommended dilution: 5000-10000

联系电话: 4008-898-798, 021-61725725

联系QQ: 2881505695, 2881505696

邮箱: mlbio_cn@yeah.net

网址: www.mlbio.cn