

## Anti-HIRIP3 antibody

<b>Cat. No.</b>	ml125454
<b>Package</b>	25 µl/100 µl/200 µl
<b>Storage</b>	-20°C, pH7.4 PBS, 0.05% NaN <sub>3</sub> , 40% Glycerol

### Product overview

<b>Description</b>	Anti-HIRIP3 rabbit polyclonal antibody
<b>Applications</b>	ELISA, IHC
<b>Immunogen</b>	Fusion protein of human HIRIP3
<b>Reactivity</b>	Human
<b>Content</b>	1.02 mg/ml
<b>Host species</b>	Rabbit
<b>Ig class</b>	Immunogen-specific rabbit IgG
<b>Purification</b>	Antigen affinity purification

### Target information

<b>Symbol</b>	HIRIP3
<b>Full name</b>	HIRA interacting protein 3
<b>Synonyms</b>	
<b>Swissprot</b>	Q9BW71

### Target Background

The HIRA protein shares sequence similarity with Hir1p and Hir2p, the two corepressors of histone gene transcription characterized in the yeast, *Saccharomyces cerevisiae*. The structural features of the HIRA protein suggest that it may function as part of a multiprotein complex. Several cDNAs encoding HIRA-interacting proteins, or HIRIPs, have been identified. In vitro, the protein encoded by this gene binds HIRA, as well as H2B and H3 core histones, indicating that a complex containing HIRA-HIRIP3 could function in some aspects of chromatin and histone metabolism. Alternatively spliced transcript variants encoding distinct isoforms have been found for this gene.

订购热线: 4008-898-798

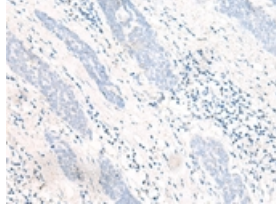
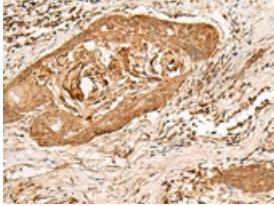
### Applications

#### Immunohistochemistry

Predicted cell location: Nucleus

Positive control: Human esophagus cancer

Recommended dilution: 50-300

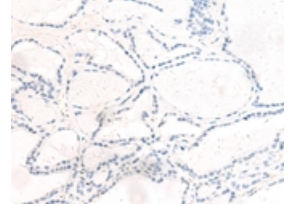
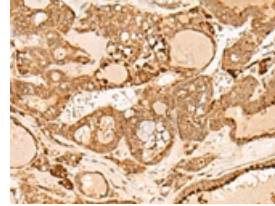


The image on the left is immunohistochemistry of paraffin-embedded Human esophagus cancer tissue using ml125454(HIRIP3 Antibody) at dilution 1/60, on the right is treated with fusion protein. (Original magnification:  $\times 200$ )

Predicted cell location: Nucleus

Positive control: Human thyroid cancer

Recommended dilution: 50-300



The image on the left is immunohistochemistry of paraffin-embedded Human thyroid cancer tissue using ml125454(HIRIP3 Antibody) at dilution 1/60, on the right is treated with fusion protein. (Original magnification:  $\times 200$ )

#### ELISA

Recommended dilution: 5000-10000

联系电话: 4008-898-798, 021-61725725

联系QQ: 2881505695, 2881505696

邮箱: [mlbio\\_cn@yeah.net](mailto:mlbio_cn@yeah.net)

网址: [www.mlbio.cn](http://www.mlbio.cn)