

Anti-FAM186B antibody

| | |
|-----------------|---|
| Cat. No. | ml125521 |
| Package | 25 µl/100 µl/200 µl |
| Storage | -20°C, pH7.4 PBS, 0.05% NaN ₃ , 40% Glycerol |

Product overview

| | |
|---------------------|---|
| Description | Anti-FAM186B rabbit polyclonal antibody |
| Applications | ELISA, IHC |
| Immunogen | Fusion protein of human FAM186B |
| Reactivity | Human |
| Content | 0.78 mg/ml |
| Host species | Rabbit |
| Ig class | Immunogen-specific rabbit IgG |
| Purification | Antigen affinity purification |

Target information

| | |
|------------------|--|
| Symbol | FAM186B |
| Full name | family with sequence similarity 186 member B |
| Synonyms | C12orf25 |
| Swissprot | Q8IYM0 |

Target Background

This gene product is a member of the FAM186 family, however, its exact function is not known. Alternatively spliced transcript variants have been found for this gene.

订购热线: 4008-898-798

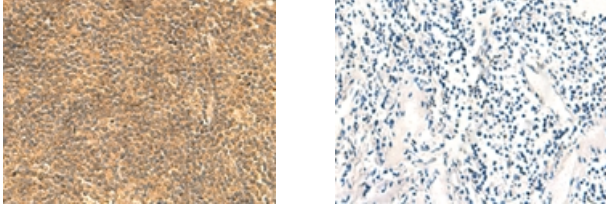
Applications

Immunohistochemistry

Predicted cell location: Cytoplasm

Positive control: Human tonsil

Recommended dilution: 30-150



The image on the left is immunohistochemistry of paraffin-embedded Human tonsil tissue using ml125521(FAM186B Antibody) at dilution 1/25, on the right is treated with fusion protein. (Original magnification: $\times 200$)

ELISA

Recommended dilution: 5000-10000

联系电话: 4008-898-798, 021-61725725

联系QQ: 2881505695, 2881505696

邮箱: mlbio_cn@yeah.net

网址: www.mlbio.cn