

Anti-DHX36 antibody

Cat. No.	ml125541
Package	25 µl/100 µl/200 µl
Storage	-20°C, pH7.4 PBS, 0.05% NaN ₃ , 40% Glycerol

Product overview

Description	Anti-DHX36 rabbit polyclonal antibody
Applications	ELISA, IHC
Immunogen	Fusion protein of human DHX36
Reactivity	Human, Mouse
Content	0.54 mg/ml
Host species	Rabbit
Ig class	Immunogen-specific rabbit IgG
Purification	Antigen affinity purification

Target information

Symbol	DHX36
Full name	DEAH-box helicase 36
Synonyms	G4R1; RHAU; DDX36; MLEL1
Swissprot	Q9H2U1

Target Background

This gene is a member of the DEAH-box family of RNA-dependent NTPases which are named after the conserved amino acid sequence Asp-Glu-Ala-His in motif II. The protein encoded by this gene has been shown to enhance the deadenylation and decay of mRNAs with 3'-UTR AU-rich elements (ARE-mRNA). The protein has also been shown to resolve into single strands the highly stable tetramolecular DNA configuration (G4) that can form spontaneously in guanine-rich regions of DNA. Alternative splicing results in multiple transcript variants encoding different isoforms.

订购热线: 4008-898-798

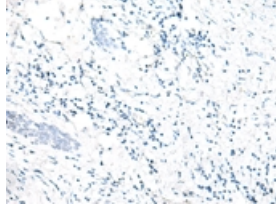
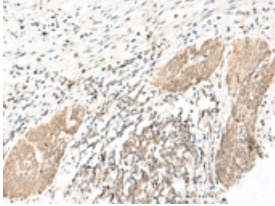
Applications

Immunohistochemistry

Predicted cell location: Nucleus

Positive control: Human esophagus cancer

Recommended dilution: 20-100

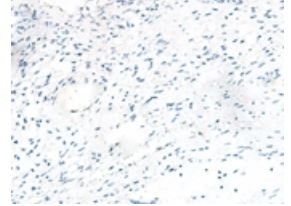
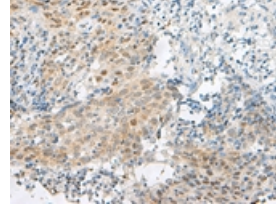


The image on the left is immunohistochemistry of paraffin-embedded Human esophagus cancer tissue using ml125541(DHX36 Antibody) at dilution 1/30, on the right is treated with fusion protein. (Original magnification: ×200)

Predicted cell location: Nucleus

Positive control: Human cervical cancer

Recommended dilution: 20-100



The image on the left is immunohistochemistry of paraffin-embedded Human cervical cancer tissue using ml125541(DHX36 Antibody) at dilution 1/30, on the right is treated with fusion protein. (Original magnification: ×200)

ELISA

Recommended dilution: 5000-10000

联系电话: 4008-898-798, 021-61725725

联系QQ: 2881505695, 2881505696

邮箱: mlbio_cn@yeah.net

网址: www.mlbio.cn