

## Anti-ZNF471 antibody

**Cat. No.** ml125548  
**Package** 25 µl/100 µl/200 µl  
**Storage** -20°C, pH7.4 PBS, 0.05% NaN<sub>3</sub>, 40% Glycerol

### Product overview

**Description** Anti-ZNF471 rabbit polyclonal antibody  
**Applications** ELISA, IHC  
**Immunogen** Fusion protein of human ZNF471  
**Reactivity** Human  
**Content** 0.96 mg/ml  
**Host species** Rabbit  
**Ig class** Immunogen-specific rabbit IgG  
**Purification** Antigen affinity purification

### Target information

**Symbol** ZNF471  
**Full name** zinc finger protein 471  
**Synonyms** ERP1; Z1971  
**Swissprot** Q9BX82

### Target Background

May be involved in transcriptional regulation.

订购热线: 4008-898-798

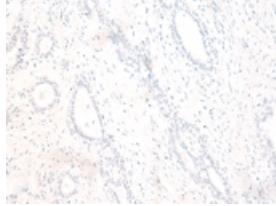
### Applications

#### Immunohistochemistry

Predicted cell location: Nucleus

Positive control: Human breast cancer

Recommended dilution: 50-300

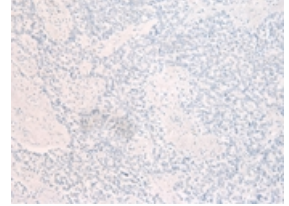
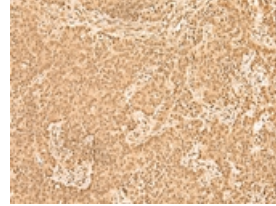


The image on the left is immunohistochemistry of paraffin-embedded Human breast cancer tissue using ml125548(ZNF471 Antibody) at dilution 1/50, on the right is treated with fusion protein. (Original magnification:  $\times 200$ )

Predicted cell location: Nucleus

Positive control: Human ovarian cancer

Recommended dilution: 50-300



The image on the left is immunohistochemistry of paraffin-embedded Human ovarian cancer tissue using ml125548(ZNF471 Antibody) at dilution 1/50, on the right is treated with fusion protein. (Original magnification:  $\times 200$ )

#### ELISA

Recommended dilution: 5000-10000

联系电话: 4008-898-798, 021-61725725

联系QQ: 2881505695, 2881505696

邮箱: [mlbio\\_cn@yeah.net](mailto:mlbio_cn@yeah.net)

网址: [www.mlbio.cn](http://www.mlbio.cn)