

Anti-LDHAL6B antibody

Cat. No.	ml125824
Package	25 µl/100 µl/200 µl
Storage	-20°C, pH7.4 PBS, 0.05% NaN ₃ , 40% Glycerol

Product overview

Description	Anti-LDHAL6B rabbit polyclonal antibody
Applications	ELISA, IHC
Immunogen	Fusion protein of human LDHAL6B
Reactivity	Human
Content	1.02 mg/ml
Host species	Rabbit
Ig class	Immunogen-specific rabbit IgG
Purification	Antigen affinity purification

Target information

Symbol	LDHAL6B
Full name	lactate dehydrogenase A like 6B
Synonyms	LDHL; LDH6B; LDHAL6
Swissprot	Q9BYZ2

Target Background

LDHAL6B belongs to the LDH/MDH superfamily, LDH family. The specific function of the protein remains unknown.

订购热线: 4008-898-798

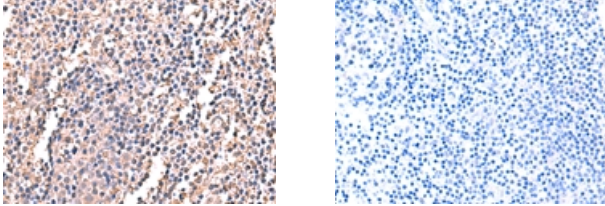
Applications

Immunohistochemistry

Predicted cell location: Cytoplasm

Positive control: Human tonsil

Recommended dilution: 50-300



The image on the left is immunohistochemistry of paraffin-embedded Human tonsil tissue using ml125824(LDHAL6B Antibody) at dilution 1/60, on the right is treated with fusion protein. (Original magnification: $\times 200$)

ELISA

Recommended dilution: 5000-10000

联系电话: 4008-898-798, 021-61725725

联系QQ: 2881505695, 2881505696

邮箱: mlbio_cn@yeah.net

网址: www.mlbio.cn