

Anti-SCCPDH antibody

Cat. No.	ml125872
Package	25 µl/100 µl/200 µl
Storage	-20°C, pH7.4 PBS, 0.05% NaN ₃ , 40% Glycerol

Product overview

Description	Anti-SCCPDH rabbit polyclonal antibody
Applications	ELISA, IHC
Immunogen	Fusion protein of human SCCPDH
Reactivity	Human, Mouse, Rat
Content	0.84 mg/ml
Host species	Rabbit
Ig class	Immunogen-specific rabbit IgG
Purification	Antigen affinity purification

Target information

Symbol	SCCPDH
Full name	saccharopine dehydrogenase (putative)
Synonyms	NET11; CGI-49
Swissprot	Q8NBX0

Target Background

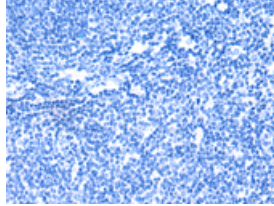
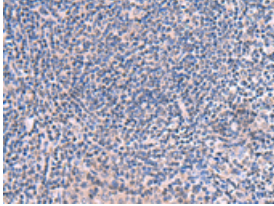
SCCPDH belongs to the saccharopine dehydrogenase family. The exact function of SCCPDH remains unknown.

订购热线: 4008-898-798

Applications

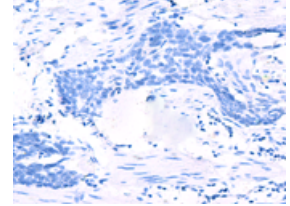
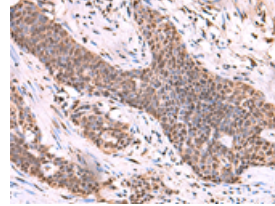
Immunohistochemistry

Predicted cell location: Cytoplasm or Nucleus
Positive control: Human tonsil
Recommended dilution: 40-200



The image on the left is immunohistochemistry of paraffin-embedded Human tonsil tissue using ml125872(SCCPDH Antibody) at dilution 1/50, on the right is treated with fusion protein. (Original magnification: ×200)

Predicted cell location: Cytoplasm or Nucleus
Positive control: Human esophagus cancer
Recommended dilution: 40-200



The image on the left is immunohistochemistry of paraffin-embedded Human esophagus cancer tissue using ml125872(SCCPDH Antibody) at dilution 1/50, on the right is treated with fusion protein. (Original magnification: ×200)

ELISA

Recommended dilution: 5000-10000

联系电话: 4008-898-798, 021-61725725

联系QQ: 2881505695, 2881505696

邮箱: mlbio_cn@yeah.net

网址: www.mlbio.cn