

Anti-GPKOW antibody

Cat. No.	ml125910
Package	25 µl/100 µl/200 µl
Storage	-20°C, pH7.4 PBS, 0.05% NaN ₃ , 40% Glycerol

Product overview

Description	Anti-GPKOW rabbit polyclonal antibody
Applications	ELISA, IHC
Immunogen	Fusion protein of human GPKOW
Reactivity	Human
Content	1.8 mg/ml
Host species	Rabbit
Ig class	Immunogen-specific rabbit IgG
Purification	Antigen affinity purification

Target information

Symbol	GPKOW
Full name	G-patch domain and KOW motifs
Synonyms	T54; Spp2; GPATC5; GPATCH5
Swissprot	Q92917

Target Background

This gene encodes a putative RNA-binding protein containing G-patch and KOW (Kyprides, Ouzounis, Woese) domains. The encoded protein interacts directly with protein kinase A and protein kinase X and is also found associated with the spliceosome.

订购热线: 4008-898-798

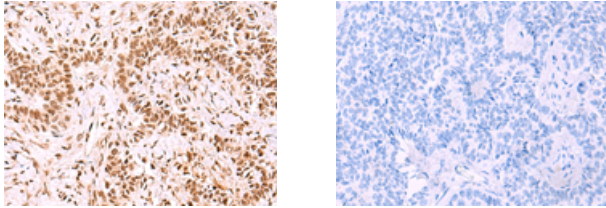
Applications

Immunohistochemistry

Predicted cell location: Nucleus

Positive control: Human ovarian cancer

Recommended dilution: 90-450



The image on the left is immunohistochemistry of paraffin-embedded Human ovarian cancer tissue using ml125910(GPKOW Antibody) at dilution 1/100, on the right is treated with fusion protein. (Original magnification: $\times 200$)

ELISA

Recommended dilution: 5000-10000

联系电话: 4008-898-798, 021-61725725

联系QQ: 2881505695, 2881505696

邮箱: mlbio_cn@yeah.net

网址: www.mlbio.cn