

Anti-VMA21 antibody

| | |
|-----------------|---|
| Cat. No. | ml151147 |
| Package | 25 µl/100 µl/200 µl |
| Storage | -20°C, pH7.4 PBS, 0.05% NaN ₃ , 40% Glycerol |

Product overview

| | |
|---------------------|---------------------------------------|
| Description | Anti-VMA21 rabbit polyclonal antibody |
| Applications | ELISA, IHC, IF |
| Immunogen | Synthetic peptide of human VMA21 |
| Reactivity | Human, Mouse |
| Content | 2.6 mg/ml |
| Host species | Rabbit |
| Ig class | Immunogen-specific rabbit IgG |
| Purification | Antigen affinity purification |

Target information

| | |
|------------------|---|
| Symbol | VMA21 |
| Full name | VMA21 vacuolar H ⁺ -ATPase homolog (S. cerevisiae) |
| Synonyms | MEAX; XMEA |
| Swissprot | Q3ZAQ7 |

Target Background

This gene encodes a chaperone for assembly of lysosomal vacuolar ATPase. Required for the assembly of the V₀ complex of the vacuolar ATPase (V-ATPase) in the endoplasmic reticulum. Associates with the V₀ complex of the vacuolar ATPase (V-ATPase). MEAX is a childhood-onset disease characterized by progressive vacuolation and atrophy of skeletal muscle. It is inherited in recessive fashion, affecting boys and sparing carrier females. Onset is in childhood, and patients exhibit weakness of the proximal muscles of the lower extremities, progressing slowly to involve other skeletal muscle groups over time.

订购热线: 4008-898-798

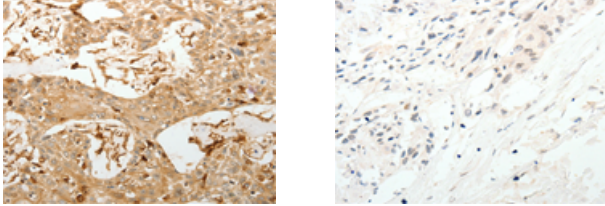
Applications

Immunohistochemistry

Predicted cell location: Cytoplasm

Positive control: Human esophagus cancer

Recommended dilution: 150-500



The image on the left is immunohistochemistry of paraffin-embedded Human esophagus cancer tissue using ml151147(VMA21 Antibody) at dilution 1/150, on the right is treated with synthetic peptide. (Original magnification: ×200)

ELISA

Recommended dilution: 5000-240000

联系电话: 4008-898-798, 021-61725725

联系QQ: 2881505695, 2881505696

邮箱: mlbio_cn@yeah.net

网址: www.mlbio.cn