

Anti-ZBTB2 antibody

Cat. No.	ml156013
Package	25 µl/100 µl/200 µl
Storage	-20°C, pH7.4 PBS, 0.05% NaN ₃ , 40% Glycerol

Product overview

Description	Anti-ZBTB2 rabbit polyclonal antibody
Applications	ELISA, IHC
Immunogen	Synthetic peptide of human ZBTB2
Reactivity	Human
Content	2 mg/ml
Host species	Rabbit
Ig class	Immunogen-specific rabbit IgG
Purification	Antigen affinity purification

Target information

Symbol	ZBTB2
Full name	zinc finger and BTB domain containing 2
Synonyms	ZNF437
Swissprot	Q8N680

Target Background

The BTB (Broad-Complex, Tramtrack and Bric a brac) domain, also known as the POZ (Poxvirus and Zinc finger) domain, is an N-terminal homodimerization domain that contains multiple copies of kelch repeats and/or C2H2-type zinc fingers. Proteins that contain BTB domains are thought to be involved in transcriptional regulation via control of chromatin structure and function. ZBTB2 is a 514 amino acid nuclear protein that contains one BTB (POZ) domain and 4 C2H2-type zinc fingers.

订购热线: 4008-898-798

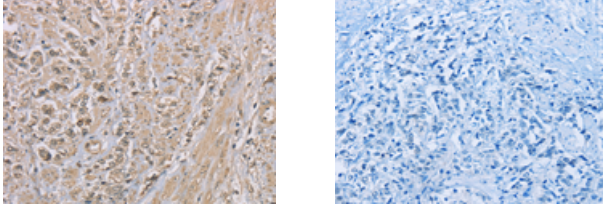
Applications

Immunohistochemistry

Predicted cell location: Cytoplasm and Nucleus

Positive control: Human prostate cancer

Recommended dilution: 50-200



The image on the left is immunohistochemistry of paraffin-embedded Human prostate cancer tissue using ml156013(ZBTB2 Antibody) at dilution 1/50, on the right is treated with synthetic peptide. (Original magnification: $\times 200$)

ELISA

Recommended dilution: 2000-5000

联系电话: 4008-898-798, 021-61725725

联系QQ: 2881505695, 2881505696

邮箱: mlbio_cn@yeah.net

网址: www.mlbio.cn