

## Anti-ZFP64 antibody

<b>Cat. No.</b>	ml156026
<b>Package</b>	25 µl/100 µl/200 µl
<b>Storage</b>	-20°C, pH7.4 PBS, 0.05% NaN <sub>3</sub> , 40% Glycerol

### Product overview

<b>Description</b>	Anti-ZFP64 rabbit polyclonal antibody
<b>Applications</b>	ELISA, IHC
<b>Immunogen</b>	Synthetic peptide of human ZFP64
<b>Reactivity</b>	Human, Mouse
<b>Content</b>	0.9 mg/ml
<b>Host species</b>	Rabbit
<b>Ig class</b>	Immunogen-specific rabbit IgG
<b>Purification</b>	Antigen affinity purification

### Target information

<b>Symbol</b>	ZFP64
<b>Full name</b>	ZFP64 zinc finger protein
<b>Synonyms</b>	ZNF338
<b>Swissprot</b>	Q9NPA5

### Target Background

Zinc-finger proteins contain DNA-binding domains and have a wide variety of functions, most of which encompass some form of transcriptional activation or repression. The majority of zinc-finger proteins contain a Krüppel-type DNA binding domain and a KRAB domain, which is thought to interact with KAP1, thereby recruiting histone modifying proteins. ZFP64 (Zinc finger protein 64), also known as ZNF338, is a 681 amino acid homolog of the mouse Zfp64 protein and is a member of the Krüppel C2H2-type zinc-finger family. Localized to the nucleus, ZFP64 contains nine C2H2-type zinc fingers and is thought to be involved in transcriptional regulation. Four isoforms of ZFP64 exist due to alternative splicing events.

订购热线: 4008-898-798

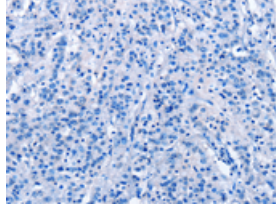
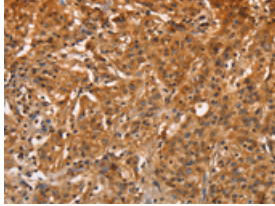
### Applications

#### Immunohistochemistry

Predicted cell location: Cytoplasm

Positive control: Human gastric cancer

Recommended dilution: 100-300

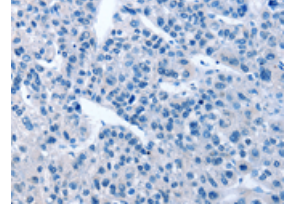
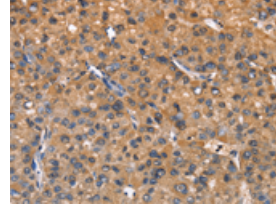


The image on the left is immunohistochemistry of paraffin-embedded Human gastric cancer tissue using ml156026(ZFP64 Antibody) at dilution 1/60, on the right is treated with synthetic peptide. (Original magnification: ×200)

Predicted cell location: Cytoplasm

Positive control: Human liver cancer

Recommended dilution: 100-300



The image on the left is immunohistochemistry of paraffin-embedded Human liver cancer tissue using ml156026(ZFP64 Antibody) at dilution 1/60, on the right is treated with synthetic peptide. (Original magnification: ×200)

#### ELISA

Recommended dilution: 2000-5000

联系电话: 4008-898-798, 021-61725725

联系QQ: 2881505695, 2881505696

邮箱: mlbio\_cn@yeah.net

网址: www.mlbio.cn