

Anti-AATK antibody

Cat. No.	ml160016
Package	25 µl/100 µl/200 µl
Storage	-20°C, pH7.4 PBS, 0.05% NaN ₃ , 40% Glycerol

Product overview

Description	Anti-AATK rabbit polyclonal antibody
Applications	ELISA, IHC
Immunogen	Synthetic peptide of human AATK
Reactivity	Human
Content	0.4 mg/ml
Host species	Rabbit
Ig class	Immunogen-specific rabbit IgG
Purification	Antigen affinity purification

Target information

Symbol	AATK
Full name	Apoptosis-associated tyrosine kinase
Synonyms	LMR1, AATYK, LMTK1, p35BP, AATYK1
Swissprot	Q6ZMQ8

Target Background

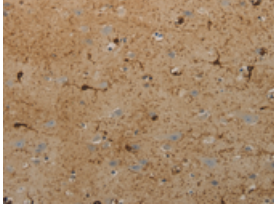
The protein encoded by this gene contains a tyrosine kinase domain at the N-terminus and a proline-rich domain at the C-terminus. This gene is induced during apoptosis, and expression of this gene may be a necessary pre-requisite for the induction of growth arrest and/or apoptosis of myeloid precursor cells. This gene has been shown to produce neuronal differentiation in a neuroblastoma cell line. Two transcript variants encoding different isoforms have been found for this gene.

订购热线: 4008-898-798

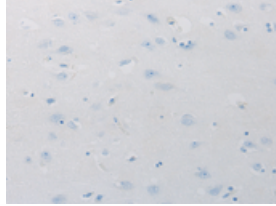
Applications

Immunohistochemistry

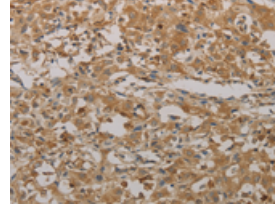
Predicted cell location: Cytoplasm
Positive control: Human brain
Recommended dilution: 25-100



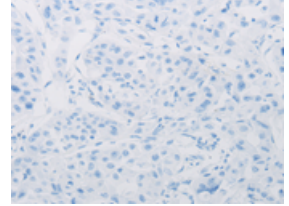
The image on the left is immunohistochemistry of paraffin-embedded Human brain tissue using ml160016(AATK Antibody) at dilution 1/25, on the right is treated with synthetic peptide. (Original magnification: ×200)



Predicted cell location: Cytoplasm
Positive control: Human lung cancer
Recommended dilution: 25-100



The image on the left is immunohistochemistry of paraffin-embedded Human lung cancer tissue using ml160016(AATK Antibody) at dilution 1/25, on the right is treated with synthetic peptide. (Original magnification: ×200)



ELISA

Recommended dilution: 2000-10000

联系电话: 4008-898-798, 021-61725725

联系QQ: 2881505695, 2881505696

邮箱: mlbio_cn@yeah.net

网址: www.mlbio.cn