

Anti-ACE2 antibody

Cat. No.	ml160021
Package	25 µl/100 µl/200 µl
Storage	-20°C, pH7.4 PBS, 0.05% NaN ₃ , 40% Glycerol

Product overview

Description	Anti-ACE2 rabbit polyclonal antibody
Applications	ELISA, IHC
Immunogen	Synthetic peptide of human ACE2
Reactivity	Human, Mouse, Rat
Content	0.5 mg/ml
Host species	Rabbit
Ig class	Immunogen-specific rabbit IgG
Purification	Antigen affinity purification

Target information

Symbol	ACE2
Full name	Angiotensin-converting enzyme 2
Synonyms	ACEH
Swissprot	Q9BYF1

Target Background

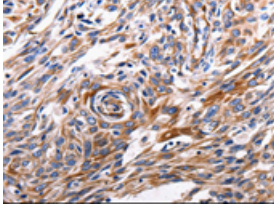
The protein encoded by this gene belongs to the angiotensin-converting enzyme family of dipeptidyl carboxydipeptidases and has considerable homology to human angiotensin 1 converting enzyme. This secreted protein catalyzes the cleavage of angiotensin I into angiotensin 1-9, and angiotensin II into the vasodilator angiotensin 1-7. The organ- and cell-specific expression of this gene suggests that it may play a role in the regulation of cardiovascular and renal function, as well as fertility. In addition, the encoded protein is a functional receptor for the spike glycoprotein of the human coronaviruses SARS and HCoV-NL63.

订购热线: 4008-898-798

Applications

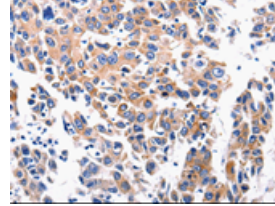
Immunohistochemistry

Predicted cell location: Cytoplasm, Cell membrane
Positive control: Human esophagus cancer
Recommended dilution: 100-300



The image is immunohistochemistry of paraffin-embedded Human esophagus cancer tissue using ml160021(ACE2 Antibody) at dilution 1/200. (Original magnification: ×200)

Predicted cell location: Cytoplasm, Cell membrane
Positive control: Human lung cancer
Recommended dilution: 100-300



The image is immunohistochemistry of paraffin-embedded Human lung cancer tissue using ml160021(ACE2 Antibody) at dilution 1/200. (Original magnification: ×200)

ELISA

Recommended dilution: 2000-10000

联系电话: 4008-898-798, 021-61725725

联系QQ: 2881505695, 2881505696

邮箱: mlbio_cn@yeah.net

网址: www.mlbio.cn