

Anti-SUMO1 antibody

Cat. No.	ml160377
Package	25 µl/100 µl/200 µl
Storage	-20°C, pH7.4 PBS, 0.05% NaN ₃ , 40% Glycerol

Product overview

Description	Anti-SUMO1 rabbit polyclonal antibody
Applications	ELISA, IHC
Immunogen	Synthetic peptide of human SUMO1
Reactivity	Human, Mouse, Rat
Content	0.4 mg/ml
Host species	Rabbit
Ig class	Immunogen-specific rabbit IgG
Purification	Antigen affinity purification

Target information

Symbol	SUMO1
Full name	SMT3 suppressor of mif two 3 homolog 1 (S. cerevisiae)
Synonyms	DAP1, GMP1, PIC1, SMT3, UBL1, OFC10, SENP2, SMT3C, SMT3H3
Swissprot	P63165

Target Background

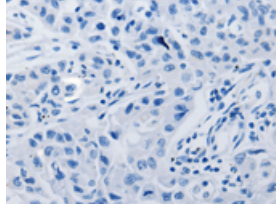
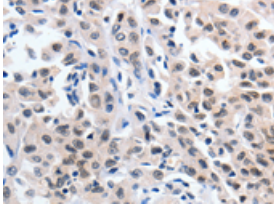
This gene encodes a protein that is a member of the SUMO (small ubiquitin-like modifier) protein family. It functions in a manner similar to ubiquitin in that it is bound to target proteins as part of a post-translational modification system. However, unlike ubiquitin which targets proteins for degradation, this protein is involved in a variety of cellular processes, such as nuclear transport, transcriptional regulation, apoptosis, and protein stability. It is not active until the last four amino acids of the carboxy-terminus have been cleaved off. Several pseudogenes have been reported for this gene. Alternate transcriptional splice variants encoding different isoforms have been characterized.

订购热线: 4008-898-798

Applications

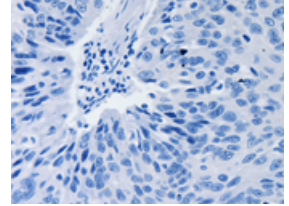
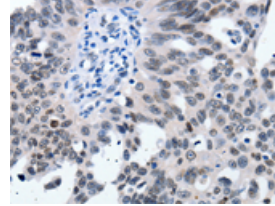
Immunohistochemistry

Predicted cell location: Cytoplasm, Nucleus
Positive control: Human lung cancer
Recommended dilution: 15-50



The image on the left is immunohistochemistry of paraffin-embedded Human lung cancer tissue using ml160377(SUMO1 Antibody) at dilution 1/20, on the right is treated with synthetic peptide. (Original magnification: $\times 200$)

Predicted cell location: Cytoplasm, Nucleus
Positive control: Human ovarian cancer
Recommended dilution: 15-50



The image on the left is immunohistochemistry of paraffin-embedded Human ovarian cancer tissue using ml160377(SUMO1 Antibody) at dilution 1/20, on the right is treated with synthetic peptide. (Original magnification: $\times 200$)

ELISA

Recommended dilution: 1000-2000

联系电话: 4008-898-798, 021-61725725

联系QQ: 2881505695, 2881505696

邮箱: mlbio_cn@yeah.net

网址: www.mlbio.cn