

## Anti-SLC2A4 antibody

<b>Cat. No.</b>	ml160436
<b>Package</b>	25 µl/100 µl/200 µl
<b>Storage</b>	-20°C, pH7.4 PBS, 0.05% NaN <sub>3</sub> , 40% Glycerol

### Product overview

<b>Description</b>	Anti-SLC2A4 rabbit polyclonal antibody
<b>Applications</b>	ELISA, IHC
<b>Immunogen</b>	Synthetic peptide of human SLC2A4
<b>Reactivity</b>	Human, Mouse, Rat
<b>Content</b>	0.3 mg/ml
<b>Host species</b>	Rabbit
<b>Ig class</b>	Immunogen-specific rabbit IgG
<b>Purification</b>	Antigen affinity purification

### Target information

<b>Symbol</b>	SLC2A4
<b>Full name</b>	solute carrier family 2 (facilitated glucose transporter), member 4
<b>Synonyms</b>	GLUT4
<b>Swissprot</b>	P14672

### Target Background

This gene is a member of the solute carrier family 2 (facilitated glucose transporter) family and encodes a protein that functions as an insulin-regulated facilitative glucose transporter. In the absence of insulin, this integral membrane protein is sequestered within the cells of muscle and adipose tissue. Within minutes of insulin stimulation, the protein moves to the cell surface and begins to transport glucose across the cell membrane. Mutations in this gene have been associated with noninsulin-dependent diabetes mellitus (NIDDM).

订购热线: 4008-898-798

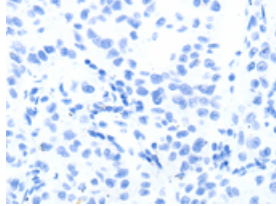
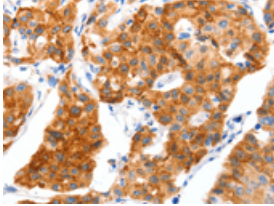
### Applications

#### Immunohistochemistry

Predicted cell location: Cytoplasm

Positive control: Human lung cancer

Recommended dilution: 50-200

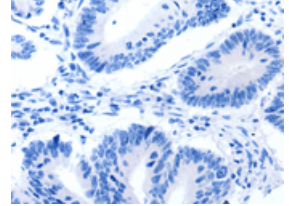
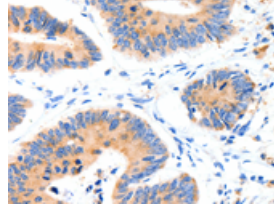


The image on the left is immunohistochemistry of paraffin-embedded Human lung cancer tissue using ml160436(SLC2A4 Antibody) at dilution 1/70, on the right is treated with synthetic peptide. (Original magnification:  $\times 200$ )

Predicted cell location: Cytoplasm

Positive control: Human colon cancer

Recommended dilution: 50-200



The image on the left is immunohistochemistry of paraffin-embedded Human colon cancer tissue using ml160436(SLC2A4 Antibody) at dilution 1/70, on the right is treated with synthetic peptide. (Original magnification:  $\times 200$ )

#### ELISA

Recommended dilution: 2000-5000

联系电话: 4008-898-798, 021-61725725

联系QQ: 2881505695, 2881505696

邮箱: [mlbio\\_cn@yeah.net](mailto:mlbio_cn@yeah.net)

网址: [www.mlbio.cn](http://www.mlbio.cn)