

## Anti-NR3C1 antibody

<b>Cat. No.</b>	ml160445
<b>Package</b>	25 µl/100 µl/200 µl
<b>Storage</b>	-20°C, pH7.4 PBS, 0.05% NaN <sub>3</sub> , 40% Glycerol

### Product overview

<b>Description</b>	Anti-NR3C1 rabbit polyclonal antibody
<b>Applications</b>	ELISA, IHC
<b>Immunogen</b>	Synthetic peptide of human NR3C1
<b>Reactivity</b>	Human, Mouse, Rat
<b>Content</b>	0.4 mg/ml
<b>Host species</b>	Rabbit
<b>Ig class</b>	Immunogen-specific rabbit IgG
<b>Purification</b>	Antigen affinity purification

### Target information

<b>Symbol</b>	NR3C1
<b>Full name</b>	nuclear receptor subfamily 3, group C, member 1 (glucocorticoid receptor)
<b>Synonyms</b>	GR; GCR; GRL; GCCR
<b>Swissprot</b>	P04150

### Target Background

This gene encodes glucocorticoid receptor, which can function both as a transcription factor that binds to glucocorticoid response elements in the promoters of glucocorticoid responsive genes to activate their transcription, and as a regulator of other transcription factors. This receptor is typically found in the cytoplasm, but upon ligand binding, is transported into the nucleus. It is involved in inflammatory responses, cellular proliferation, and differentiation in target tissues. Mutations in this gene are associated with generalized glucocorticoid resistance.

订购热线: 4008-898-798

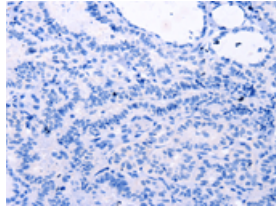
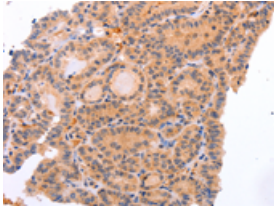
### Applications

#### Immunohistochemistry

Predicted cell location: Cytoplasm

Positive control: Human thyroid cancer

Recommended dilution: 15-50

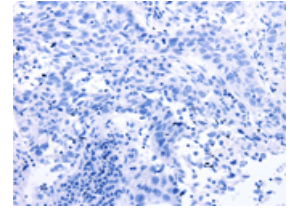
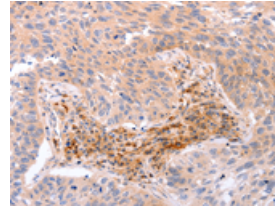


The image on the left is immunohistochemistry of paraffin-embedded Human thyroid cancer tissue using ml160445(NR3C1 Antibody) at dilution 1/25, on the right is treated with synthetic peptide. (Original magnification: ×200)

Predicted cell location: Cytoplasm

Positive control: Human lung cancer

Recommended dilution: 15-50



The image on the left is immunohistochemistry of paraffin-embedded Human lung cancer tissue using ml160445(NR3C1 Antibody) at dilution 1/25, on the right is treated with synthetic peptide. (Original magnification: ×200)

#### ELISA

Recommended dilution: 1000-2000

联系电话: 4008-898-798, 021-61725725

联系QQ: 2881505695, 2881505696

邮箱: [mlbio\\_cn@yeah.net](mailto:mlbio_cn@yeah.net)

网址: [www.mlbio.cn](http://www.mlbio.cn)