

Anti-KISS1 antibody

Cat. No.	ml160530
Package	25 µl/100 µl/200 µl
Storage	-20°C, pH7.4 PBS, 0.05% NaN ₃ , 40% Glycerol

Product overview

Description	Anti-KISS1 rabbit polyclonal antibody
Applications	ELISA, IHC
Immunogen	Synthetic peptide of human KISS1
Reactivity	Human
Content	0.72 mg/ml
Host species	Rabbit
Ig class	Immunogen-specific rabbit IgG
Purification	Antigen affinity purification

Target information

Symbol	KISS1
Full name	KiSS-1 metastasis-suppressor
Synonyms	HH13; KiSS-1
Swissprot	Q15726

Target Background

This gene is a metastasis suppressor gene that suppresses metastases of melanomas and breast carcinomas without affecting tumorigenicity. The encoded protein may inhibit chemotaxis and invasion and thereby attenuate metastasis in malignant melanomas. Studies suggest a putative role in the regulation of events downstream of cell-matrix adhesion, perhaps involving cytoskeletal reorganization. A protein product of this gene, kisspeptin, stimulates gonadotropin-releasing hormone (GnRH)-induced gonadotropin secretion and regulates the pubertal activation of GnRH neurons. A polymorphism in the terminal exon of this mRNA results in two protein isoforms. An adenosine present at the polymorphic site represents the third position in a stop codon. When the adenosine is absent, a downstream stop codon is utilized and the encoded protein extends for an additional seven amino acid residues.

订购热线: 4008-898-798

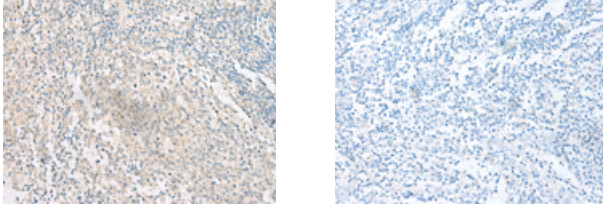
Applications

Immunohistochemistry

Predicted cell location: Secreted

Positive control: Human tonsil

Recommended dilution: 10-50



The image on the left is immunohistochemistry of paraffin-embedded Human tonsil tissue using ml160530(KISS1 Antibody) at dilution 1/25, on the right is treated with synthetic peptide. (Original magnification: $\times 200$)

ELISA

Recommended dilution: 5000-10000

联系电话: 4008-898-798, 021-61725725

联系QQ: 2881505695, 2881505696

邮箱: mlbio_cn@yeah.net

网址: www.mlbio.cn