

Anti-ITGAL antibody

Cat. No.	ml160572
Package	25 µl/100 µl/200 µl
Storage	-20°C, pH7.4 PBS, 0.05% NaN ₃ , 40% Glycerol

Product overview

Description	Anti-ITGAL rabbit polyclonal antibody
Applications	ELISA, IHC
Immunogen	Synthetic peptide of human ITGAL
Reactivity	Human
Content	0.1 mg/ml
Host species	Rabbit
Ig class	Immunogen-specific rabbit IgG
Purification	Antigen affinity purification

Target information

Symbol	ITGAL
Full name	integrin, alpha L (antigen CD11A (p180), lymphocyte function-associated antigen 1; alpha polypeptide)
Synonyms	CD11A, LFA-1, LFA1A
Swissprot	P20701

Target Background

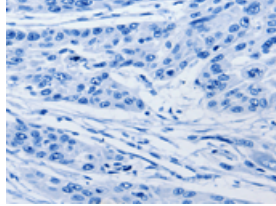
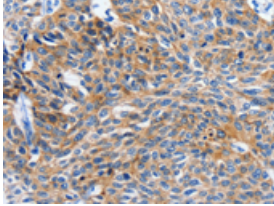
ITGAL encodes the integrin alpha L chain. Integrins are heterodimeric integral membrane proteins composed of an alpha chain and a beta chain. This I-domain containing alpha integrin combines with the beta 2 chain (ITGB2) to form the integrin lymphocyte function-associated antigen-1 (LFA-1), which is expressed on all leukocytes. LFA-1 plays a central role in leukocyte intercellular adhesion through interactions with its ligands, ICAMs 1-3 (intercellular adhesion molecules 1 through 3), and also functions in lymphocyte costimulatory signaling. Two transcript variants encoding different isoforms have been found for this gene.

订购热线: 4008-898-798

Applications

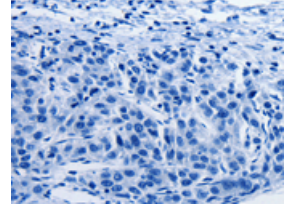
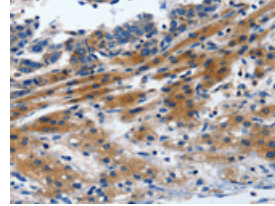
Immunohistochemistry

Predicted cell location: Cytoplasm, Cell membrane
Positive control: Human esophagus cancer
Recommended dilution: 15-50



The image on the left is immunohistochemistry of paraffin-embedded Human esophagus cancer tissue using ml160572(ITGAL Antibody) at dilution 1/20, on the right is treated with synthetic peptide. (Original magnification: $\times 200$)

Predicted cell location: Cytoplasm, Cell membrane
Positive control: Human liver cancer
Recommended dilution: 15-50



The image on the left is immunohistochemistry of paraffin-embedded Human liver cancer tissue using ml160572(ITGAL Antibody) at dilution 1/20, on the right is treated with synthetic peptide. (Original magnification: $\times 200$)

ELISA

Recommended dilution: 1000-2000

联系电话: 4008-898-798, 021-61725725

联系QQ: 2881505695, 2881505696

邮箱: mlbio_cn@yeah.net

网址: www.mlbio.cn