

Anti-ABCC1 antibody

Cat. No.	ml160613
Package	25 µl/100 µl/200 µl
Storage	-20°C, pH7.4 PBS, 0.05% NaN ₃ , 40% Glycerol

Product overview

Description	Anti-ABCC1 rabbit polyclonal antibody
Applications	ELISA, IHC
Immunogen	Synthetic peptide of human ABCC1
Reactivity	Human
Content	0.3 mg/ml
Host species	Rabbit
Ig class	Immunogen-specific rabbit IgG
Purification	Antigen affinity purification

Target information

Symbol	ABCC1
Full name	ATP-binding cassette, sub-family C (CFTR/MRP), member 1
Synonyms	MRP, ABCC, GS-X, MRP1, ABC29
Swissprot	P33527

Target Background

The protein encoded by this gene is a member of the superfamily of ATP-binding cassette (ABC) transporters. ABC proteins transport various molecules across extra-and intra-cellular membranes. ABC genes are divided into seven distinct subfamilies (ABC1, MDR/TAP, MRP, ALD, OABP, GCN20, White). This full transporter is a member of the MRP subfamily which is involved in multi-drug resistance. This protein functions as a multispecific organic anion transporter, with oxidized glutathione, cysteinyl leukotrienes, and activated aflatoxin B1 as substrates. This protein also transports glucuronides and sulfate conjugates of steroid hormones and bile salts. Alternatively spliced variants of this gene have been described but their full-length nature is unknown.

订购热线: 4008-898-798

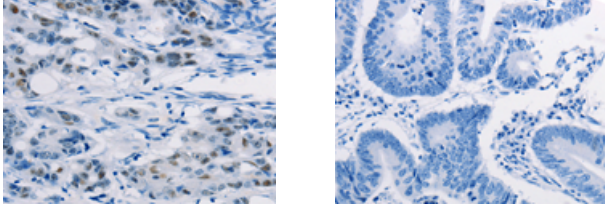
Applications

Immunohistochemistry

Predicted cell location: Nucleus

Positive control: Human colon cancer

Recommended dilution: 10-50



The image on the left is immunohistochemistry of paraffin-embedded Human colon cancer tissue using ml160613(ABCC1 Antibody) at dilution 1/20, on the right is treated with synthetic peptide. (Original magnification: $\times 200$)

ELISA

Recommended dilution: 1000-2000

联系电话: 4008-898-798, 021-61725725

联系QQ: 2881505695, 2881505696

邮箱: mlbio_cn@yeah.net

网址: www.mlbio.cn