

Anti-NBEA antibody

Cat. No.	ml160663
Package	25 µl/100 µl/200 µl
Storage	-20°C, pH7.4 PBS, 0.05% NaN ₃ , 40% Glycerol

Product overview

Description	Anti-NBEA rabbit polyclonal antibody
Applications	ELISA, IHC
Immunogen	Synthetic peptide of human NBEA
Reactivity	Human, Mouse
Content	0.4 mg/ml
Host species	Rabbit
Ig class	Immunogen-specific rabbit IgG
Purification	Antigen affinity purification

Target information

Symbol	NBEA
Full name	neurobeachin
Synonyms	BCL8B, LYST2
Swissprot	Q8NFP9

Target Background

This gene encodes a member of a large, diverse group of A-kinase anchor proteins that target the activity of protein kinase A to specific subcellular sites by binding to its type II regulatory subunits. Brain-specific expression and coat protein-like membrane recruitment of a highly similar protein in mouse suggest an involvement in neuronal post-Golgi membrane traffic. Mutations in this gene may be associated with a form of autism. This gene and its expression are frequently disrupted in patients with multiple myeloma. Alternative splicing results in multiple transcript variants encoding distinct isoforms. Additional transcript variants may exist, but their full-length nature has not been determined.

订购热线: 4008-898-798

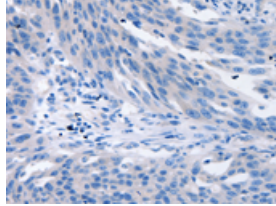
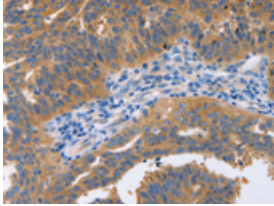
Applications

Immunohistochemistry

Predicted cell location: Cytoplasm

Positive control: Human ovarian cancer

Recommended dilution: 25-100

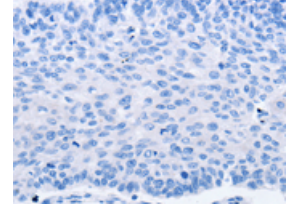
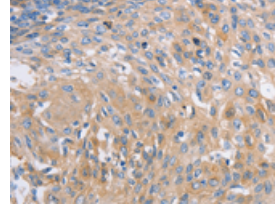


The image on the left is immunohistochemistry of paraffin-embedded Human ovarian cancer tissue using ml160663(NBEA Antibody) at dilution 1/60, on the right is treated with synthetic peptide. (Original magnification: $\times 200$)

Predicted cell location: Cytoplasm

Positive control: Human cervical cancer

Recommended dilution: 25-100



The image on the left is immunohistochemistry of paraffin-embedded Human cervical cancer tissue using ml160663(NBEA Antibody) at dilution 1/60, on the right is treated with synthetic peptide. (Original magnification: $\times 200$)

ELISA

Recommended dilution: 1000-5000

联系电话: 4008-898-798, 021-61725725

联系QQ: 2881505695, 2881505696

邮箱: mlbio_cn@yeah.net

网址: www.mlbio.cn