

Anti-GRIN1 antibody

| | |
|-----------------|---|
| Cat. No. | ml160671 |
| Package | 25 µl/100 µl/200 µl |
| Storage | -20°C, pH7.4 PBS, 0.05% NaN ₃ , 40% Glycerol |

Product overview

| | |
|---------------------|---------------------------------------|
| Description | Anti-GRIN1 rabbit polyclonal antibody |
| Applications | ELISA, IHC |
| Immunogen | Synthetic peptide of human GRIN1 |
| Reactivity | Human, Mouse, Rat |
| Content | 0.2 mg/ml |
| Host species | Rabbit |
| Ig class | Immunogen-specific rabbit IgG |
| Purification | Antigen affinity purification |

Target information

| | |
|------------------|--|
| Symbol | GRIN1 |
| Full name | glutamate receptor, ionotropic, N-methyl D-aspartate 1 |
| Synonyms | NR1, MRD8, GluN1, NMDA1, NMDAR1 |
| Swissprot | Q05586 |

Target Background

The protein encoded by this gene is a critical subunit of N-methyl-D-aspartate receptors, members of the glutamate receptor channel superfamily which are heteromeric protein complexes with multiple subunits arranged to form a ligand-gated ion channel. These subunits play a key role in the plasticity of synapses, which is believed to underlie memory and learning. Cell-specific factors are thought to control expression of different isoforms, possibly contributing to the functional diversity of the subunits. Alternatively spliced transcript variants have been described.

订购热线: 4008-898-798

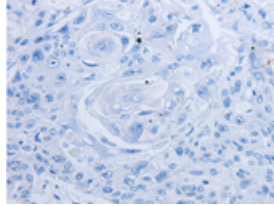
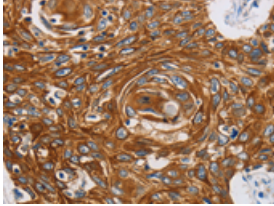
Applications

Immunohistochemistry

Predicted cell location: Cytoplasm

Positive control: Human esophagus cancer

Recommended dilution: 50-200

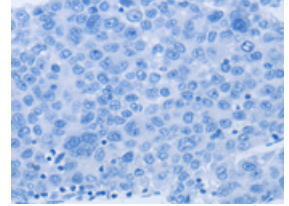
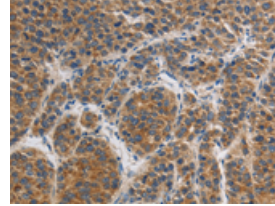


The image on the left is immunohistochemistry of paraffin-embedded Human esophagus cancer tissue using ml160671(GRIN1 Antibody) at dilution 1/45, on the right is treated with synthetic peptide. (Original magnification: $\times 200$)

Predicted cell location: Cytoplasm

Positive control: Human liver cancer

Recommended dilution: 50-200



The image on the left is immunohistochemistry of paraffin-embedded Human liver cancer tissue using ml160671(GRIN1 Antibody) at dilution 1/45, on the right is treated with synthetic peptide. (Original magnification: $\times 200$)

ELISA

Recommended dilution: 2000-5000

联系电话: 4008-898-798, 021-61725725

联系QQ: 2881505695, 2881505696

邮箱: mlbio_cn@yeah.net

网址: www.mlbio.cn