

## Anti-ABI3BP antibody

<b>Cat. No.</b>	ml160814
<b>Package</b>	25 µl/100 µl/200 µl
<b>Storage</b>	-20°C, pH7.4 PBS, 0.05% NaN <sub>3</sub> , 40% Glycerol

### Product overview

<b>Description</b>	Anti-ABI3BP rabbit polyclonal antibody
<b>Applications</b>	ELISA, IHC
<b>Immunogen</b>	Synthetic peptide of human ABI3BP
<b>Reactivity</b>	Human
<b>Content</b>	0.2 mg/ml
<b>Host species</b>	Rabbit
<b>Ig class</b>	Immunogen-specific rabbit IgG
<b>Purification</b>	Antigen affinity purification

### Target information

<b>Symbol</b>	ABI3BP
<b>Full name</b>	ABI family, member 3 (NESH) binding protein
<b>Synonyms</b>	TARSH; NESHBP
<b>Swissprot</b>	Q7Z7G0

### Target Background

TARSH gene expression is dramatically induced in mouse embryonic fibroblasts (MEFs) replicative senescence and suppressed in human lung carcinoma specimens and thyroid carcinomas. The experiment observed that ABI3 expression is reduced or lost in most carcinomas but also that there is a positive correlation between ABI3 and ABI3BP expression. And it express high levels in brain, heart, lung, liver, pancreas kidney and placenta.

订购热线: 4008-898-798

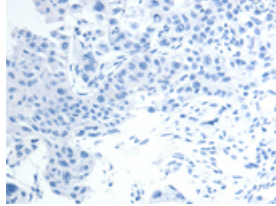
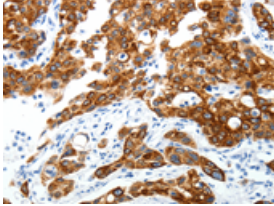
### Applications

#### Immunohistochemistry

Predicted cell location: Secreted

Positive control: Human lung cancer

Recommended dilution: 25-100

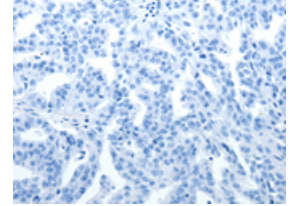
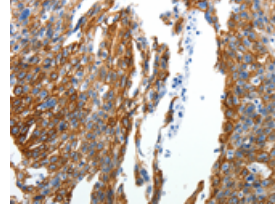


The image on the left is immunohistochemistry of paraffin-embedded Human lung cancer tissue using ml160814(ABI3BP Antibody) at dilution 1/25, on the right is treated with synthetic peptide. (Original magnification: ×200)

Predicted cell location: Secreted

Positive control: Human ovarian cancer

Recommended dilution: 25-100



The image on the left is immunohistochemistry of paraffin-embedded Human ovarian cancer tissue using ml160814(ABI3BP Antibody) at dilution 1/25, on the right is treated with synthetic peptide. (Original magnification: ×200)

#### ELISA

Recommended dilution: 2000-5000

联系电话: 4008-898-798, 021-61725725

联系QQ: 2881505695, 2881505696

邮箱: [mlbio\\_cn@yeah.net](mailto:mlbio_cn@yeah.net)

网址: [www.mlbio.cn](http://www.mlbio.cn)