

Anti-ALYREF antibody

Cat. No.	ml160858
Package	25 µl/100 µl/200 µl
Storage	-20°C, pH7.4 PBS, 0.05% NaN ₃ , 40% Glycerol

Product overview

Description	Anti-ALYREF rabbit polyclonal antibody
Applications	ELISA, IHC
Immunogen	Synthetic peptide of human ALYREF
Reactivity	Human, Mouse
Content	0.2 mg/ml
Host species	Rabbit
Ig class	Immunogen-specific rabbit IgG
Purification	Antigen affinity purification

Target information

Symbol	ALYREF
Full name	Aly/REF export factor
Synonyms	ALY; BEF; REF; THOC4; ALY/REF
Swissprot	Q86V81

Target Background

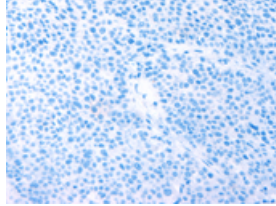
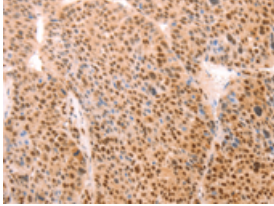
The protein encoded by this gene is a heat stable, nuclear protein and functions as a molecular chaperone. It is thought to regulate dimerization, DNA binding, and transcriptional activity of basic region-leucine zipper (bZIP) proteins.

订购热线: 4008-898-798

Applications

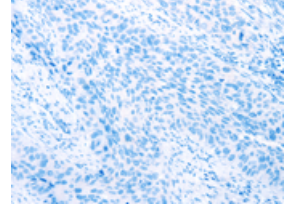
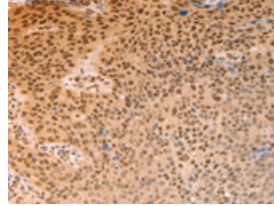
Immunohistochemistry

Predicted cell location: Nucleus, Cytoplasm
Positive control: Human liver cancer
Recommended dilution: 25-100



The image on the left is immunohistochemistry of paraffin-embedded Human liver cancer tissue using ml160858(ALYREF Antibody) at dilution 1/15, on the right is treated with synthetic peptide. (Original magnification: ×200)

Predicted cell location: Nucleus, Cytoplasm
Positive control: Human lymphoma
Recommended dilution: 25-100



The image on the left is immunohistochemistry of paraffin-embedded Human lymphoma tissue using ml160858(ALYREF Antibody) at dilution 1/15, on the right is treated with synthetic peptide. (Original magnification: ×200)

ELISA

Recommended dilution: 2000-5000

联系电话: 4008-898-798, 021-61725725

联系QQ: 2881505695, 2881505696

邮箱: mlbio_cn@yeah.net

网址: www.mlbio.cn