

Anti-MUC16 antibody

Cat. No.	ml161007
Package	25 µl/100 µl/200 µl
Storage	-20°C, pH7.4 PBS, 0.05% NaN ₃ , 40% Glycerol

Product overview

Description	Anti-MUC16 rabbit polyclonal antibody
Applications	ELISA, IHC
Immunogen	Synthetic peptide of human MUC16
Reactivity	Human
Content	0.3 mg/ml
Host species	Rabbit
Ig class	Immunogen-specific rabbit IgG
Purification	Antigen affinity purification

Target information

Symbol	MUC16
Full name	mucin 16, cell surface associated
Synonyms	CA125
Swissprot	Q8WXI7

Target Background

CA-125 (cancer antigen 125 or carbohydrate antigen 125) also known as mucin 16 or MUC16 is a protein that in humans is encoded by the MUC16 gene. MUC16 is a member of the mucin family glycoproteins. CA-125 has found application as a tumor marker or biomarker that may be elevated in the blood of some patients with specific types of cancers, or other benign conditions. Expressed in corneal and conjunctival epithelia (at protein level). Overexpressed in ovarian carcinomas and ovarian low malignant potential (LMP) tumors as compared to the expression in normal ovarian tissue and ovarian adenomas.

订购热线: 4008-898-798

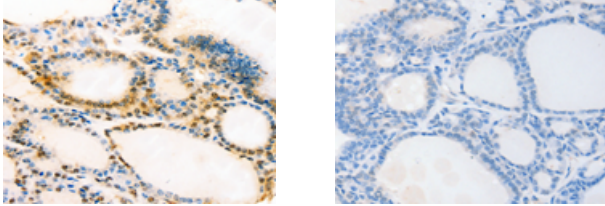
Applications

Immunohistochemistry

Predicted cell location: cytoplasm, Nucleus

Positive control: Human thyroid cancer

Recommended dilution: 15-50



The image on the left is immunohistochemistry of paraffin-embedded Human thyroid cancer tissue using ml161007(MUC16 Antibody) at dilution 1/20, on the right is treated with synthetic peptide. (Original magnification: $\times 200$)

ELISA

Recommended dilution: 1000-2000

联系电话: 4008-898-798, 021-61725725

联系QQ: 2881505695, 2881505696

邮箱: mlbio_cn@yeah.net

网址: www.mlbio.cn