

Anti-NPY2R antibody

Cat. No.	ml161047
Package	25 µl/100 µl/200 µl
Storage	-20°C, pH7.4 PBS, 0.05% NaN ₃ , 40% Glycerol

Product overview

Description	Anti-NPY2R rabbit polyclonal antibody
Applications	ELISA, IHC
Immunogen	Synthetic peptide of human NPY2R
Reactivity	Human, Mouse
Content	0.3 mg/ml
Host species	Rabbit
Ig class	Immunogen-specific rabbit IgG
Purification	Antigen affinity purification

Target information

Symbol	NPY2R
Full name	neuropeptide Y receptor Y2
Synonyms	NPY2-R
Swissprot	P49146

Target Background

Neuropeptide Y receptor type 2 (Y2R) is a protein that in humans is encoded by the NPY2R gene. Receptor for neuropeptide Y and peptide YY. The rank order of affinity of this receptor for pancreatic polypeptides is PYY > NPY > PYY (3-36) > NPY (2-36) > [Ile-31, Gln-34] PP > [Leu-31, Pro-34] NPY > PP, [Pro-34] PYY and NPY free acid. High levels in amygdala, corpus callosum, hippocampus and subthalamic nucleus. Also detectable in caudate nucleus, hypothalamus and substantia nigra.

订购热线: 4008-898-798

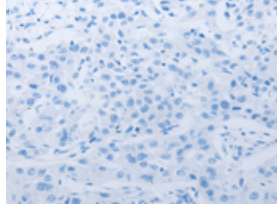
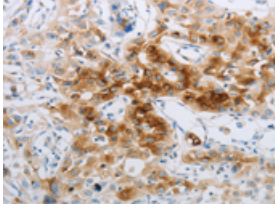
Applications

Immunohistochemistry

Predicted cell location: Cytoplasm

Positive control: Human lung cancer

Recommended dilution: 15-50

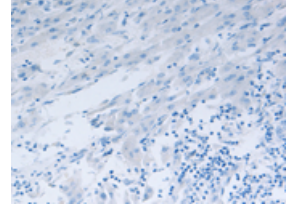
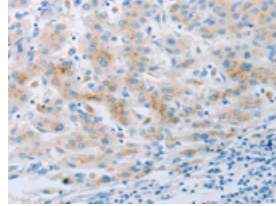


The image on the left is immunohistochemistry of paraffin-embedded Human lung cancer tissue using ml161047(NPY2R Antibody) at dilution 1/20, on the right is treated with synthetic peptide. (Original magnification: $\times 200$)

Predicted cell location: Cytoplasm

Positive control: Human liver cancer

Recommended dilution: 15-50



The image on the left is immunohistochemistry of paraffin-embedded Human liver cancer tissue using ml161047(NPY2R Antibody) at dilution 1/20, on the right is treated with synthetic peptide. (Original magnification: $\times 200$)

ELISA

Recommended dilution: 1000-2000

联系电话: 4008-898-798, 021-61725725

联系QQ: 2881505695, 2881505696

邮箱: mlbio_cn@yeah.net

网址: www.mlbio.cn