

Anti-NPY4R antibody

Cat. No.	ml161048
Package	25 µl/100 µl/200 µl
Storage	-20°C, pH7.4 PBS, 0.05% NaN ₃ , 40% Glycerol

Product overview

Description	Anti-NPY4R rabbit polyclonal antibody
Applications	ELISA, IHC
Immunogen	Synthetic peptide of human NPY4R
Reactivity	Human
Content	0.8 mg/ml
Host species	Rabbit
Ig class	Immunogen-specific rabbit IgG
Purification	Antigen affinity purification

Target information

Symbol	NPY4R
Full name	neuropeptide Y receptor Y4
Synonyms	Y4; PP1; PPYR1; NPY4-R
Swissprot	P50391

Target Background

NPY4-R is expressed in several human tissues, including brain, coronary artery, and ileum. NPY4-R maps to human chromosome 10q11.2. NPY4R belongs to the Neuropeptide Receptor GPCR Family and may regulate central nervous system, cardiovascular, and gastrointestinal function.

订购热线: 4008-898-798

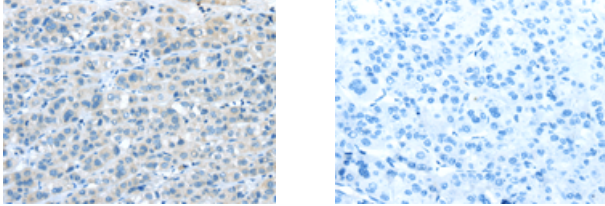
Applications

Immunohistochemistry

Predicted cell location: Cytoplasm and Cell membrane

Positive control: Human liver cancer

Recommended dilution: 25-100



The image on the left is immunohistochemistry of paraffin-embedded Human liver cancer tissue using ml161048(NPY4R Antibody) at dilution 1/30, on the right is treated with synthetic peptide. (Original magnification: $\times 200$)

ELISA

Recommended dilution: 2000-5000

联系电话: 4008-898-798, 021-61725725

联系QQ: 2881505695, 2881505696

邮箱: mlbio_cn@yeah.net

网址: www.mlbio.cn