

Anti-POU3F1 antibody

Cat. No.	ml161058
Package	25 µl/100 µl/200 µl
Storage	-20°C, pH7.4 PBS, 0.05% NaN ₃ , 40% Glycerol

Product overview

Description	Anti-POU3F1 rabbit polyclonal antibody
Applications	ELISA, IHC
Immunogen	Synthetic peptide of human POU3F1
Reactivity	Human, Mouse, Rat
Content	0.3 mg/ml
Host species	Rabbit
Ig class	Immunogen-specific rabbit IgG
Purification	Antigen affinity purification

Target information

Symbol	POU3F1
Full name	POU class 3 homeobox 1
Synonyms	OCT6; OTF6; SCIP
Swissprot	Q03052

Target Background

This gene belongs to the POU transcription factor family. Class-3 subfamily. It is transcription factor that binds to the octamer motif (5'-ATTTGCAT-3'). Thought to be involved in early embryogenesis and neurogenesis. Mostly expressed in embryonal stem cells and in the developing brain.

订购热线: 4008-898-798

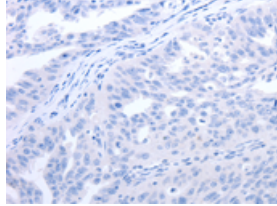
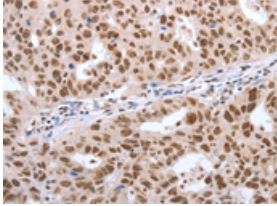
Applications

Immunohistochemistry

Predicted cell location: Nucleus

Positive control: Human ovarian cancer

Recommended dilution: 50-200

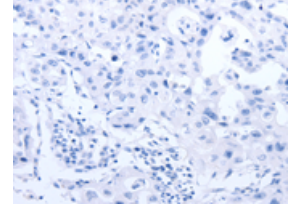
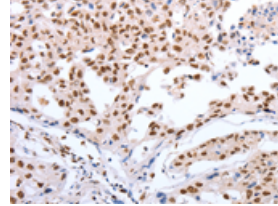


The image on the left is immunohistochemistry of paraffin-embedded Human ovarian cancer tissue using ml161058(POU3F1 Antibody) at dilution 1/40, on the right is treated with synthetic peptide. (Original magnification: $\times 200$)

Predicted cell location: Nucleus

Positive control: Human lung cancer

Recommended dilution: 50-200



The image on the left is immunohistochemistry of paraffin-embedded Human lung cancer tissue using ml161058(POU3F1 Antibody) at dilution 1/40, on the right is treated with synthetic peptide. (Original magnification: $\times 200$)

ELISA

Recommended dilution: 2000-5000

联系电话: 4008-898-798, 021-61725725

联系QQ: 2881505695, 2881505696

邮箱: mlbio_cn@yeah.net

网址: www.mlbio.cn