

Anti-LPAR1 antibody

Cat. No.	ml161193
Package	25 µl/100 µl/200 µl
Storage	-20°C, pH7.4 PBS, 0.05% NaN ₃ , 40% Glycerol

Product overview

Description	Anti-LPAR1 rabbit polyclonal antibody
Applications	ELISA, IHC
Immunogen	Synthetic peptide of human LPAR1
Reactivity	Human, Mouse, Rat
Content	0.3 mg/ml
Host species	Rabbit
Ig class	Immunogen-specific rabbit IgG
Purification	Antigen affinity purification

Target information

Symbol	LPAR1
Full name	lysophosphatidic acid receptor 1
Synonyms	EDG2; LPA1; VZG1; GPR26; edg-2; vzg-1; Gpcr26; Mrec1.3; rec.1.3
Swissprot	Q92633

Target Background

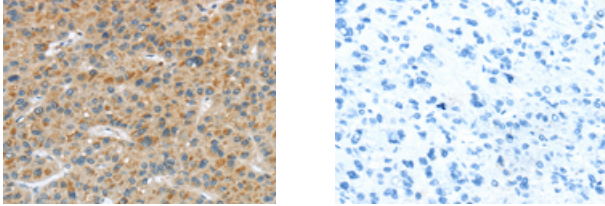
The integral membrane protein encoded by this gene is a lysophosphatidic acid (LPA) receptor from a group known as EDG receptors. These receptors are members of the G protein-coupled receptor superfamily. Utilized by LPA for cell signaling, EDG receptors mediate diverse biologic functions, including proliferation, platelet aggregation, smooth muscle contraction, inhibition of neuroblastoma cell differentiation, chemotaxis, and tumor cell invasion.

订购热线: 4008-898-798

Applications

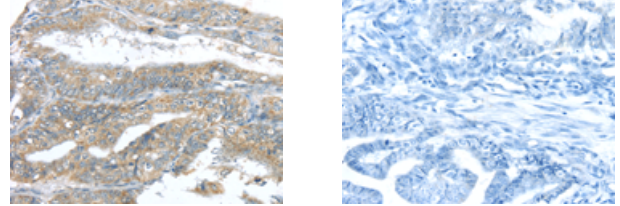
Immunohistochemistry

Predicted cell location: Cell membrane
Positive control: Human liver cancer
Recommended dilution: 25-100



The image on the left is immunohistochemistry of paraffin-embedded Human liver cancer tissue using ml161193(LPAR1 Antibody) at dilution 1/20, on the right is treated with synthetic peptide. (Original magnification: ×200)

Predicted cell location: Cell membrane
Positive control: Human esophagus cancer
Recommended dilution: 25-100



The image on the left is immunohistochemistry of paraffin-embedded Human esophagus cancer tissue using ml161193(LPAR1 Antibody) at dilution 1/20, on the right is treated with synthetic peptide. (Original magnification: ×200)

ELISA

Recommended dilution: 2000-5000

联系电话: 4008-898-798, 021-61725725

联系QQ: 2881505695, 2881505696

邮箱: mlbio_cn@yeah.net

网址: www.mlbio.cn