

Anti-HTRA3 antibody

Cat. No.	ml161337
Package	25 µl/100 µl/200 µl
Storage	-20°C, pH7.4 PBS, 0.05% NaN ₃ , 40% Glycerol

Product overview

Description	Anti-HTRA3 rabbit polyclonal antibody
Applications	ELISA, IHC
Immunogen	Synthetic peptide of human HTRA3
Reactivity	Human, Mouse, Rat
Content	0.2 mg/ml
Host species	Rabbit
Ig class	Immunogen-specific rabbit IgG
Purification	Antigen affinity purification

Target information

Symbol	HTRA3
Full name	HtrA serine peptidase 3
Synonyms	Prsp; Tasp
Swissprot	P83110

Target Background

HtrA3, also known as PRSP (pregnancy-related serine protease), is a 453 amino acid secreted protein that contains one PDZ domain, one Kazal-like domain and one IGF1BP N-terminal domain. Widely expressed with particularly high expression in ovary, heart, placenta and bladder, HtrA3 functions as a probable serine protease that is thought to play an important role in placental development. HtrA3 is downregulated in ovarian tumors, suggesting an alternative role in tumor suppression. HtrA3 exists as two alternatively spliced isoforms, designated short and long. The gene encoding HtrA3 maps to human chromosome 4, which encodes nearly 6% of the human genome and has the largest gene deserts (regions of the genome with no protein encoding genes) of all of the human chromosomes.

订购热线: 4008-898-798

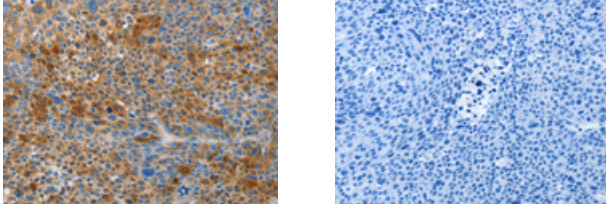
Applications

Immunohistochemistry

Predicted cell location: Cytoplasm

Positive control: Human liver cancer

Recommended dilution: 50-200



The image on the left is immunohistochemistry of paraffin-embedded Human liver cancer tissue using ml161337(HTRA3 Antibody) at dilution 1/45, on the right is treated with synthetic peptide. (Original magnification: $\times 200$)

ELISA

Recommended dilution: 1000-5000

联系电话: 4008-898-798, 021-61725725

联系QQ: 2881505695, 2881505696

邮箱: mlbio_cn@yeah.net

网址: www.mlbio.cn