

Anti-NEK10 antibody

Cat. No.	ml161382
Package	25 µl/100 µl/200 µl
Storage	-20°C, pH7.4 PBS, 0.05% NaN ₃ , 40% Glycerol

Product overview

Description	Anti-NEK10 rabbit polyclonal antibody
Applications	ELISA, IHC
Immunogen	Synthetic peptide of human NEK10
Reactivity	Human
Content	0.1 mg/ml
Host species	Rabbit
Ig class	Immunogen-specific rabbit IgG
Purification	Antigen affinity purification

Target information

Symbol	NEK10
Full name	NIMA-related kinase 10
Synonyms	
Swissprot	Q6ZWH5

Target Background

Nek10 (NIMA (never in mitosis gene a)-related kinase 10) is a 712 amino acid protein belonging to the NIMA subfamily of kinases and functions as a magnesium-dependent serine/threonine protein kinase. Kinases of the NIMA subfamily are typically involved in genotoxic stress response and DNA replication. Nek10 is expressed in brain and may contain a 14-3-3 interaction motif in its C-terminus. The gene encoding Nek10 has been localized to a region on chromosome 3 that may contribute to vulnerability to addictions. Due to alternative splicing events, three isoforms exist for Nek10.

订购热线: 4008-898-798

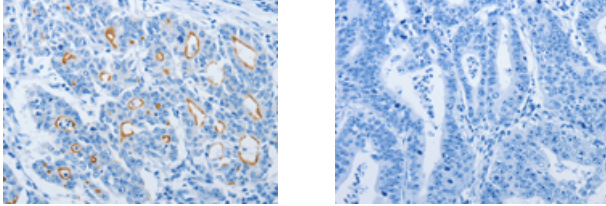
Applications

Immunohistochemistry

Predicted cell location: Luminal membranous

Positive control: Human gasrtic cancer

Recommended dilution: 25-100



The image on the left is immunohistochemistry of paraffin-embedded Human gastric cancer tissue using ml161382(NEK10 Antibody) at dilution 1/20, on the right is treated with synthetic peptide. (Original magnification: ×200)

ELISA

Recommended dilution: 2000-5000

联系电话: 4008-898-798, 021-61725725

联系QQ: 2881505695, 2881505696

邮箱: mlbio_cn@yeah.net

网址: www.mlbio.cn