

Anti-CAGE1 antibody

Cat. No.	ml161504
Package	25 µl/100 µl/200 µl
Storage	-20°C, pH7.4 PBS, 0.05% NaN ₃ , 40% Glycerol

Product overview

Description	Anti-CAGE1 rabbit polyclonal antibody
Applications	ELISA, IHC
Immunogen	Synthetic peptide of human CAGE1
Reactivity	Human
Content	0.3 mg/ml
Host species	Rabbit
Ig class	Immunogen-specific rabbit IgG
Purification	Antigen affinity purification

Target information

Symbol	CAGE1
Full name	cancer antigen 1
Synonyms	CT3; CT95; CTAG3; bA69L16.7
Swissprot	Q8TC20

Target Background

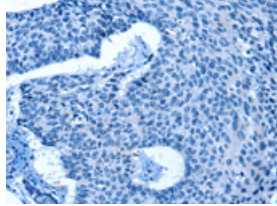
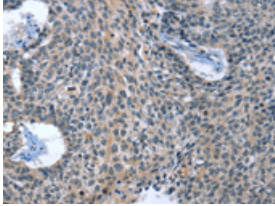
CAGE1, also known as CT3; CT95; CTAG3; bA69L16.7, is a 639-amino acid protein. It shares 76% sequence identity with a monkey homolog. RT-PCR analysis detected testis-specific expression among normal tissues and wide expression among various cancer tissues and cancer cell lines including those from cervical, melanoma, hepatic, renal, myeloma, and breast cancers. CTAG3 was overexpressed in cancer tissues compared with surrounding noncancerous tissues. Transfection experiments with a GFP-CTAG3 construct indicated a predominantly nuclear localization.

订购热线: 4008-898-798

Applications

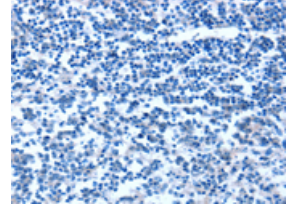
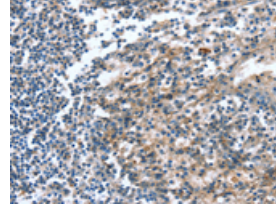
Immunohistochemistry

Predicted cell location: Cytoplasm
Positive control: Human lung cancer
Recommended dilution: 15-50



The image on the left is immunohistochemistry of paraffin-embedded Human lung cancer tissue using ml161504(CAGE1 Antibody) at dilution 1/15, on the right is treated with synthetic peptide. (Original magnification: ×200)

Predicted cell location: Cytoplasm
Positive control: Human tonsil
Recommended dilution: 15-50



The image on the left is immunohistochemistry of paraffin-embedded Human tonsil tissue using ml161504(CAGE1 Antibody) at dilution 1/15, on the right is treated with synthetic peptide. (Original magnification: ×200)

ELISA

Recommended dilution: 1000-2000

联系电话: 4008-898-798, 021-61725725

联系QQ: 2881505695, 2881505696

邮箱: mlbio_cn@yeah.net

网址: www.mlbio.cn