

Anti-CAMTA1 antibody

Cat. No.	ml161507
Package	25 µl/100 µl/200 µl
Storage	-20°C, pH7.4 PBS, 0.05% NaN ₃ , 40% Glycerol

Product overview

Description	Anti-CAMTA1 rabbit polyclonal antibody
Applications	ELISA, IHC
Immunogen	Synthetic peptide of human CAMTA1
Reactivity	Human, Mouse
Content	0.3 mg/ml
Host species	Rabbit
Ig class	Immunogen-specific rabbit IgG
Purification	Antigen affinity purification

Target information

Symbol	CAMTA1
Full name	calmodulin binding transcription activator 1
Synonyms	CANPMR
Swissprot	Q9Y6Y1

Target Background

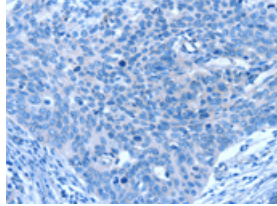
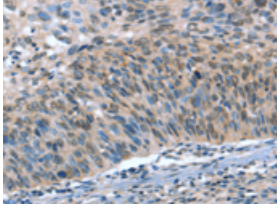
Calmodulin-binding transcription activator 1 is a protein that in humans is encoded by the CAMTA1 gene. Normally expressed in non-neoplastic adult central nervous system tissues: detected in whole brain, cerebellum, brain cortex, occipital lobe, frontal lobe, temporal lobe, putamen. Expression levels are low in oligodendroglial tumors, and are reduced by half in oligodendroglioma and astrocytoma cases with 1p loss of heterozygosity. Detected in neuroblastic-type cultured neuroblastoma cells.

订购热线: 4008-898-798

Applications

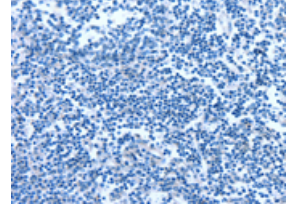
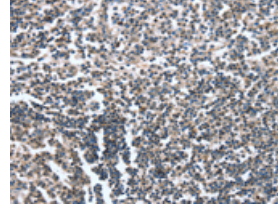
Immunohistochemistry

Predicted cell location: Cytoplasm and Nucleus
Positive control: Human cervical cancer
Recommended dilution: 15-50



The image on the left is immunohistochemistry of paraffin-embedded Human cervical cancer tissue using ml161507(CAMTA1 Antibody) at dilution 1/15, on the right is treated with synthetic peptide. (Original magnification: ×200)

Predicted cell location: Cytoplasm and Nucleus
Positive control: Human tonsil
Recommended dilution: 15-50



The image on the left is immunohistochemistry of paraffin-embedded Human tonsil tissue using ml161507(CAMTA1 Antibody) at dilution 1/15, on the right is treated with synthetic peptide. (Original magnification: ×200)

ELISA

Recommended dilution: 1000-2000

联系电话: 4008-898-798, 021-61725725

联系QQ: 2881505695, 2881505696

邮箱: mlbio_cn@yeah.net

网址: www.mlbio.cn