

Anti-CDCA5 antibody

Cat. No.	ml161548
Package	25 µl/100 µl/200 µl
Storage	-20°C, pH7.4 PBS, 0.05% NaN ₃ , 40% Glycerol

Product overview

Description	Anti-CDCA5 rabbit polyclonal antibody
Applications	ELISA, IHC
Immunogen	Synthetic peptide of human CDCA5
Reactivity	Human, Mouse
Content	0.6 mg/ml
Host species	Rabbit
Ig class	Immunogen-specific rabbit IgG
Purification	Antigen affinity purification

Target information

Symbol	CDCA5
Full name	cell division cycle associated 5
Synonyms	SORORIN
Swissprot	Q96FF9

Target Background

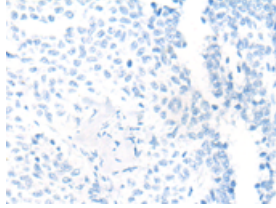
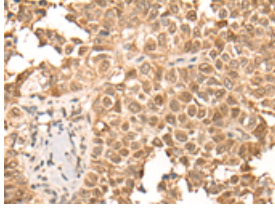
Regulator of sister chromatid cohesion in mitosis stabilizing cohesin complex association with chromatin. May antagonize the action of WAPL which stimulates cohesin dissociation from chromatin. Cohesion ensures that chromosome partitioning is accurate in both meiotic and mitotic cells and plays an important role in DNA repair. Required for efficient DNA double-stranded break repair.

订购热线: 4008-898-798

Applications

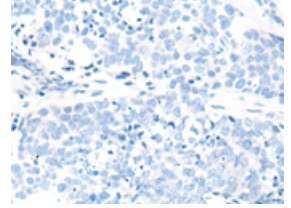
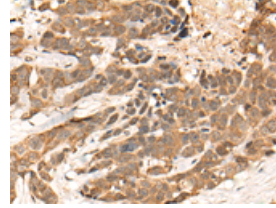
Immunohistochemistry

Predicted cell location: Nucleus and Cytoplasm
Positive control: Human ovarian cancer
Recommended dilution: 25-100



The image on the left is immunohistochemistry of paraffin-embedded Human ovarian cancer tissue using ml161548(CDCA5 Antibody) at dilution 1/25, on the right is treated with synthetic peptide. (Original magnification: $\times 200$)

Predicted cell location: Nucleus and Cytoplasm
Positive control: Human thyroid cancer
Recommended dilution: 25-100



The image on the left is immunohistochemistry of paraffin-embedded Human thyroid cancer tissue using ml161548(CDCA5 Antibody) at dilution 1/25, on the right is treated with synthetic peptide. (Original magnification: $\times 200$)

ELISA

Recommended dilution: 5000-10000

联系电话: 4008-898-798, 021-61725725

联系QQ: 2881505695, 2881505696

邮箱: mlbio_cn@yeah.net

网址: www.mlbio.cn