

Anti-CEBPB antibody

Cat. No.	ml161551
Package	25 µl/100 µl/200 µl
Storage	-20°C, pH7.4 PBS, 0.05% NaN ₃ , 40% Glycerol

Product overview

Description	Anti-CEBPB rabbit polyclonal antibody
Applications	ELISA, IHC
Immunogen	Synthetic peptide of human CEBPB
Reactivity	Human, Mouse, Rat
Content	0.8 mg/ml
Host species	Rabbit
Ig class	Immunogen-specific rabbit IgG
Purification	Antigen affinity purification

Target information

Symbol	CEBPB
Full name	CCAAT/enhancer binding protein (C/EBP), beta
Synonyms	LAP; CRP2; TCF5; IL6DBP; NF-IL6; C/EBP-beta
Swissprot	P17676

Target Background

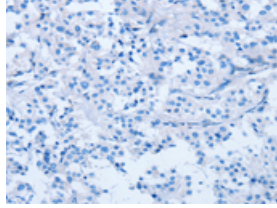
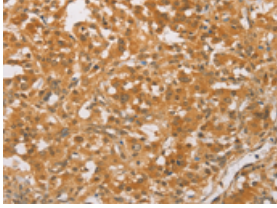
The protein encoded by this intronless gene is a bZIP transcription factor which can bind as a homodimer to certain DNA regulatory regions. It can also form heterodimers with the related proteins CEBP-alpha, CEBP-delta, and CEBP-gamma. The encoded protein is important in the regulation of genes involved in immune and inflammatory responses and has been shown to bind to the IL-1 response element in the IL-6 gene, as well as to regulatory regions of several acute-phase and cytokine genes. In addition, the encoded protein can bind the promoter and upstream element and stimulate the expression of the collagen type I gene.

订购热线: 4008-898-798

Applications

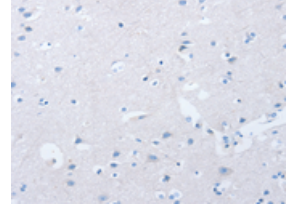
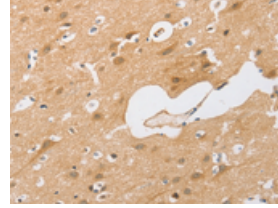
Immunohistochemistry

Predicted cell location: Nucleus and Cytoplasm
Positive control: Human thyroid cancer
Recommended dilution: 50-200



The image on the left is immunohistochemistry of paraffin-embedded Human thyroid cancer tissue using ml161551(CEBPB Antibody) at dilution 1/60, on the right is treated with synthetic peptide. (Original magnification: $\times 200$)

Predicted cell location: Nucleus and Cytoplasm
Positive control: Human brain
Recommended dilution: 50-200



The image on the left is immunohistochemistry of paraffin-embedded Human brain tissue using ml161551(CEBPB Antibody) at dilution 1/60, on the right is treated with synthetic peptide. (Original magnification: $\times 200$)

ELISA

Recommended dilution: 1000-5000

联系电话: 4008-898-798, 021-61725725

联系QQ: 2881505695, 2881505696

邮箱: mlbio_cn@yeah.net

网址: www.mlbio.cn