

## Anti-MT-CYB antibody

<b>Cat. No.</b>	ml161603
<b>Package</b>	25 µl/100 µl/200 µl
<b>Storage</b>	-20°C, pH7.4 PBS, 0.05% NaN <sub>3</sub> , 40% Glycerol

### Product overview

<b>Description</b>	Anti-MT-CYB rabbit polyclonal antibody
<b>Applications</b>	ELISA, IHC
<b>Immunogen</b>	Synthetic peptide of human MT-CYB
<b>Reactivity</b>	Human
<b>Content</b>	1 mg/ml
<b>Host species</b>	Rabbit
<b>Ig class</b>	Immunogen-specific rabbit IgG
<b>Purification</b>	Antigen affinity purification

### Target information

<b>Symbol</b>	MT-CYB
<b>Full name</b>	mitochondrially encoded cytochrome b
<b>Synonyms</b>	MTCYB; CYTB
<b>Swissprot</b>	P00156

### Target Background

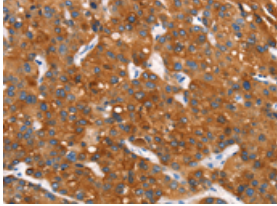
Cytochrome b is a component of the ubiquinol-cytochrome c reductase complex, which is a respiratory chain that generates an electrochemical potential, coupled to ATP synthesis. The principal components of the b-c1 complex are cytochrome b, cytochrome c1, and the rieske protein. Cytochrome b possesses two heme groups, which are not covalently attached to the protein. Mutations in cytochrome b are associated with Leber's hereditary optic neuropathy and with myopathy.

订购热线: 4008-898-798

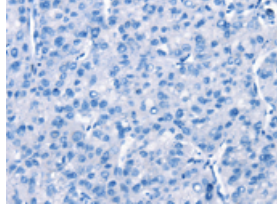
### Applications

#### Immunohistochemistry

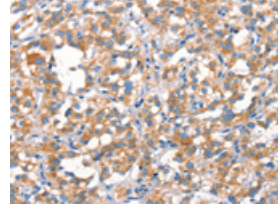
Predicted cell location: Cytoplasm  
Positive control: Human liver cancer  
Recommended dilution: 50-200



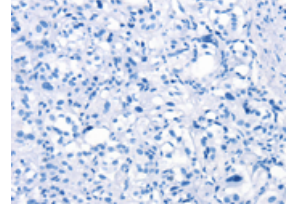
The image on the left is immunohistochemistry of paraffin-embedded Human liver cancer tissue using ml161603(MT-CYB Antibody) at dilution 1/30, on the right is treated with synthetic peptide. (Original magnification:  $\times 200$ )



Predicted cell location: Cytoplasm  
Positive control: Human thyroid cancer  
Recommended dilution: 50-200



The image on the left is immunohistochemistry of paraffin-embedded Human thyroid cancer tissue using ml161603(MT-CYB Antibody) at dilution 1/30, on the right is treated with synthetic peptide. (Original magnification:  $\times 200$ )



#### ELISA

Recommended dilution: 2000-5000

联系电话: 4008-898-798, 021-61725725

联系QQ: 2881505695, 2881505696

邮箱: [mlbio\\_cn@yeah.net](mailto:mlbio_cn@yeah.net)

网址: [www.mlbio.cn](http://www.mlbio.cn)