

Anti-DEAF1 antibody

Cat. No.	ml161612
Package	25 µl/100 µl/200 µl
Storage	-20°C, pH7.4 PBS, 0.05% NaN ₃ , 40% Glycerol

Product overview

Description	Anti-DEAF1 rabbit polyclonal antibody
Applications	ELISA, IHC
Immunogen	Synthetic peptide of human DEAF1
Reactivity	Human
Content	0.5 mg/ml
Host species	Rabbit
Ig class	Immunogen-specific rabbit IgG
Purification	Antigen affinity purification

Target information

Symbol	DEAF1
Full name	DEAF1 transcription factor
Synonyms	SPN; NUDR; ZMYND5
Swissprot	O75398

Target Background

Suppressin, also known as DEAF1 (deformed epidermal autoregulatory factor 1), SPN, NUDR (nuclear DEAF-1-related transcriptional regulator), or ZMYND5 (zinc finger MYND domain-containing protein 5), is a transcription factor required for embryonic development. Suppressin contains one SAND domain and one C-terminal MYND-type zinc finger. It interacts with LMO4 and CLIM-2, suggesting that it plays a role mediating cell fate and embryonic pattern formation. Suppressin is expressed in a variety of tissues and localizes to the nucleus. Several isoforms exist due to alternative splicing and, depending on the isoform, Suppressin is secreted in some cell types. Secreted Suppressin can function to inhibit cell proliferation, arresting cells in the G0 or G1 phase. Mutations in the gene encoding Suppressin may result in a growth advantage leading to the development and progression of neoplasia. This suggest that Supressin is a potential target for cancer therapy.

订购热线: 4008-898-798

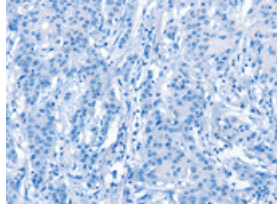
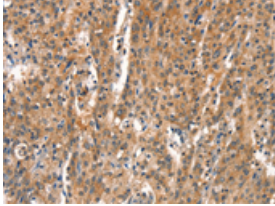
Applications

Immunohistochemistry

Predicted cell location: Cytoplasm

Positive control: Human gasrtic cancer

Recommended dilution: 25-100

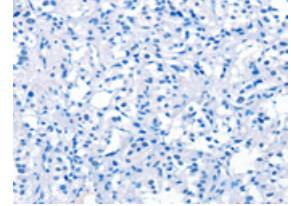
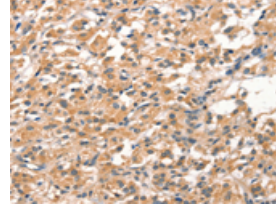


The image on the left is immunohistochemistry of paraffin-embedded Human gasrtic cancer tissue using ml161612(DEAF1 Antibody) at dilution 1/15, on the right is treated with synthetic peptide. (Original magnification: ×200)

Predicted cell location: Cytoplasm

Positive control: Human thyroid cancer

Recommended dilution: 25-100



The image on the left is immunohistochemistry of paraffin-embedded Human thyroid cancer tissue using ml161612(DEAF1 Antibody) at dilution 1/15, on the right is treated with synthetic peptide. (Original magnification: ×200)

ELISA

Recommended dilution: 1000-2000

联系电话: 4008-898-798, 021-61725725

联系QQ: 2881505695, 2881505696

邮箱: mlbio_cn@yeah.net

网址: www.mlbio.cn