

Anti-SLC11A2 antibody

| | |
|-----------------|---|
| Cat. No. | ml161627 |
| Package | 25 µl/100 µl/200 µl |
| Storage | -20°C, pH7.4 PBS, 0.05% NaN ₃ , 40% Glycerol |

Product overview

| | |
|---------------------|---|
| Description | Anti-SLC11A2 rabbit polyclonal antibody |
| Applications | ELISA, IHC |
| Immunogen | Synthetic peptide of human SLC11A2 |
| Reactivity | Human, Mouse, Rat |
| Content | 0.8 mg/ml |
| Host species | Rabbit |
| Ig class | Immunogen-specific rabbit IgG |
| Purification | Antigen affinity purification |

Target information

| | |
|------------------|--|
| Symbol | SLC11A2 |
| Full name | solute carrier family 11 (proton-coupled divalent metal ion transporter), member 2 |
| Synonyms | DCT1; DMT1; NRAMP2 |
| Swissprot | P49281 |

Target Background

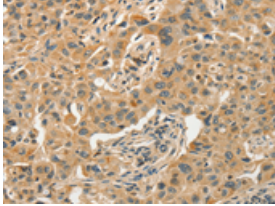
This gene encodes a member of the solute carrier family 11 protein family. The product of this gene transports divalent metals and is involved in iron absorption. Mutations in this gene are associated with hypochromic microcytic anemia with iron overload. A related solute carrier family 11 protein gene is located on chromosome 2. Multiple transcript variants encoding different isoforms have been found for this gene.

订购热线: 4008-898-798

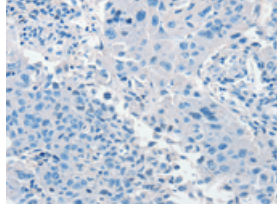
Applications

Immunohistochemistry

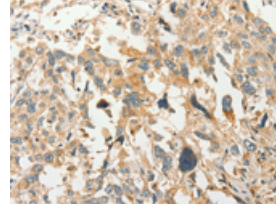
Predicted cell location: Cytoplasm
Positive control: Human lung cancer
Recommended dilution: 50-200



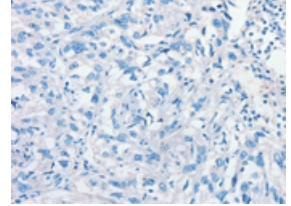
The image on the left is immunohistochemistry of paraffin-embedded Human lung cancer tissue using ml161627(SLC11A2 Antibody) at dilution 1/50, on the right is treated with synthetic peptide. (Original magnification: ×200)



Predicted cell location: Cytoplasm
Positive control: Human esophagus cancer
Recommended dilution: 50-200



The image on the left is immunohistochemistry of paraffin-embedded Human esophagus cancer tissue using ml161627(SLC11A2 Antibody) at dilution 1/50, on the right is treated with synthetic peptide. (Original magnification: ×200)



ELISA

Recommended dilution: 1000-5000

联系电话: 4008-898-798, 021-61725725

联系QQ: 2881505695, 2881505696

邮箱: mlbio_cn@yeah.net

网址: www.mlbio.cn