

## Anti-FDCSP antibody

|                 |   |
|-----------------|---|
| <b>Cat. No.</b> | ml161676  |
| <b>Package</b>  | 25 µl/100 µl/200 µl                                     |
| <b>Storage</b>  | -20°C, pH7.4 PBS, 0.05% NaN <sub>3</sub> , 40% Glycerol |

### Product overview

|                     |                                       |
|---------------------|---------------------------------------|
| <b>Description</b>  | Anti-FDCSP rabbit polyclonal antibody |
| <b>Applications</b> | ELISA, IHC                            |
| <b>Immunogen</b>    | Synthetic peptide of human FDCSP      |
| <b>Reactivity</b>   | Human                                 |
| <b>Content</b>      | 0.6 mg/ml                             |
| <b>Host species</b> | Rabbit                                |
| <b>Ig class</b>     | Immunogen-specific rabbit IgG         |
| <b>Purification</b> | Antigen affinity purification         |

### Target information

|                  |  |
|------------------|--|
| <b>Symbol</b>    | FDCSP                                      |
| <b>Full name</b> | follicular dendritic cell secreted protein |
| <b>Synonyms</b>  | C4orf7; FDC-SP                             |
| <b>Swissprot</b> | Q8NFU4                                     |

### Target Background

This gene encodes a small secreted protein that is expressed in follicular dendritic cells. This protein specifically binds to activated B cells, and functions as a regulator of antibody responses. It is also thought to contribute to tumor metastases by promoting cancer cell migration and invasion.

订购热线: 4008-898-798

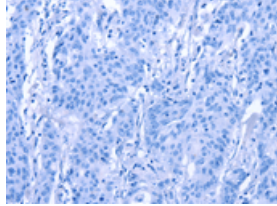
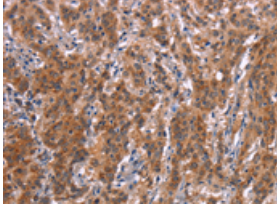
### Applications

#### Immunohistochemistry

Predicted cell location: Cytoplasm

Positive control: Human gasrtic cancer

Recommended dilution: 25-100

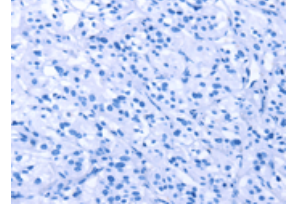
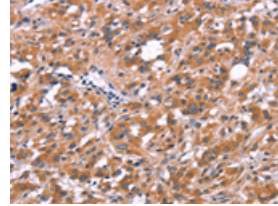


The image on the left is immunohistochemistry of paraffin-embedded Human gasrtic cancer tissue using ml161676(FDCSP Antibody) at dilution 1/25, on the right is treated with synthetic peptide. (Original magnification: ×200)

Predicted cell location: Cytoplasm

Positive control: Human thyroid cancer

Recommended dilution: 25-100



The image on the left is immunohistochemistry of paraffin-embedded Human thyroid cancer tissue using ml161676(FDCSP Antibody) at dilution 1/25, on the right is treated with synthetic peptide. (Original magnification: ×200)

#### ELISA

Recommended dilution: 1000-2000

联系电话: 4008-898-798, 021-61725725

联系QQ: 2881505695, 2881505696

邮箱: [mlbio\\_cn@yeah.net](mailto:mlbio_cn@yeah.net)

网址: [www.mlbio.cn](http://www.mlbio.cn)