

Anti-FEM1A antibody

Cat. No.	ml161678
Package	25 µl/100 µl/200 µl
Storage	-20°C, pH7.4 PBS, 0.05% NaN ₃ , 40% Glycerol

Product overview

Description	Anti-FEM1A rabbit polyclonal antibody
Applications	ELISA, IHC
Immunogen	Synthetic peptide of human FEM1A
Reactivity	Human
Content	0.7 mg/ml
Host species	Rabbit
Ig class	Immunogen-specific rabbit IgG
Purification	Antigen affinity purification

Target information

Symbol	FEM1A
Full name	fem-1 homolog a (C. elegans)
Synonyms	EPRAP
Swissprot	Q9BSK4

Target Background

FEM1A (FEM-1 homolog a), also known as EPRAP (Prostaglandin E receptor 4-associated protein), is a 669 amino acid cytoplasmic protein that belongs to the FEM-1 family. FEM1A is present in atheromata and in macrophages derived from peripheral blood monocytes. FEM1A may be a component of an E3 ubiquitin-protein ligase complex and functions as a substrate recognition subunit. It is suggested that FEM1A participates in anti-inflammatory signaling of macrophages via its interaction with EP4. FEM1A is down-regulated in Rhabdomyosarcoma, the most common soft tissue neoplasm of children. FEM1A is considered a candidate gene for polycystic ovary syndrome.

订购热线: 4008-898-798

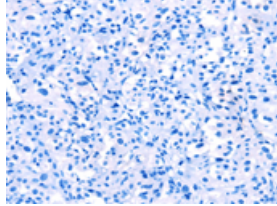
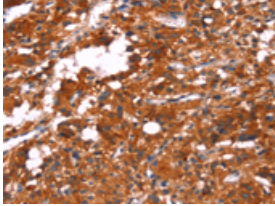
Applications

Immunohistochemistry

Predicted cell location: Cytoplasm

Positive control: Human thyroid cancer

Recommended dilution: 25-100

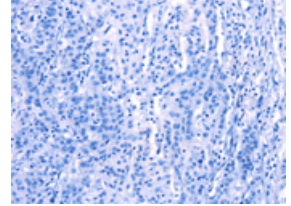
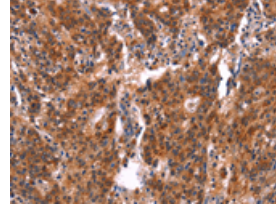


The image on the left is immunohistochemistry of paraffin-embedded Human thyroid cancer tissue using ml161678(FEM1A Antibody) at dilution 1/20, on the right is treated with synthetic peptide. (Original magnification: $\times 200$)

Predicted cell location: Cytoplasm

Positive control: Human gastric cancer

Recommended dilution: 25-100



The image on the left is immunohistochemistry of paraffin-embedded Human gastric cancer tissue using ml161678(FEM1A Antibody) at dilution 1/20, on the right is treated with synthetic peptide. (Original magnification: $\times 200$)

ELISA

Recommended dilution: 1000-2000

联系电话: 4008-898-798, 021-61725725

联系QQ: 2881505695, 2881505696

邮箱: mlbio_cn@yeah.net

网址: www.mlbio.cn