

## Anti-TUBGCP2 antibody

<b>Cat. No.</b>	ml161704
<b>Package</b>	25 µl/100 µl/200 µl
<b>Storage</b>	-20°C, pH7.4 PBS, 0.05% NaN <sub>3</sub> , 40% Glycerol

### Product overview

<b>Description</b>	Anti-TUBGCP2 rabbit polyclonal antibody
<b>Applications</b>	ELISA, IHC
<b>Immunogen</b>	Synthetic peptide of human TUBGCP2
<b>Reactivity</b>	Human, Mouse
<b>Content</b>	0.7 mg/ml
<b>Host species</b>	Rabbit
<b>Ig class</b>	Immunogen-specific rabbit IgG
<b>Purification</b>	Antigen affinity purification

### Target information

<b>Symbol</b>	TUBGCP2
<b>Full name</b>	tubulin, gamma complex associated protein 2
<b>Synonyms</b>	GCP2; GCP-2; h103p; hGCP2; SPBC97; Spc97p; hSpc97; Grip103
<b>Swissprot</b>	Q9BSJ2

### Target Background

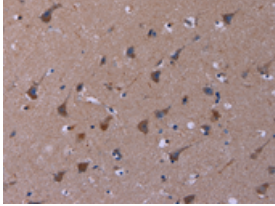
Gamma-tubulin complex component 2 is a protein that in humans is encoded by the TUBGCP2 gene. It is part of the gamma tubulin complex, which required for microtubule nucleation at the centrosome. Gamma-tubulin complex is necessary for microtubule nucleation at the centrosome. Gamma-tubulin complex is composed of gamma-tubulin, TUBGCP2, TUBGCP3, TUBGCP4, TUBGCP5 and TUBGCP6.

订购热线: 4008-898-798

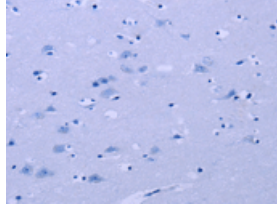
### Applications

#### Immunohistochemistry

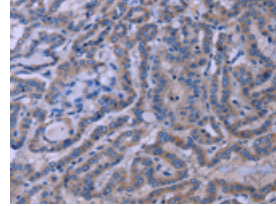
Predicted cell location: Cytoplasm  
Positive control: Human brain  
Recommended dilution: 50-200



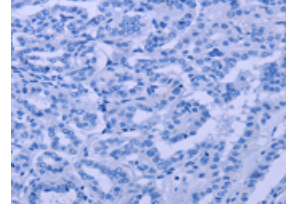
The image on the left is immunohistochemistry of paraffin-embedded Human brain tissue using ml161704(TUBGCP2 Antibody) at dilution 1/50, on the right is treated with synthetic peptide. (Original magnification:  $\times 200$ )



Predicted cell location: Cytoplasm  
Positive control: Human thyroid cancer  
Recommended dilution: 50-200



The image on the left is immunohistochemistry of paraffin-embedded Human thyroid cancer tissue using ml161704(TUBGCP2 Antibody) at dilution 1/50, on the right is treated with synthetic peptide. (Original magnification:  $\times 200$ )



#### ELISA

Recommended dilution: 2000-5000

联系电话: 4008-898-798, 021-61725725

联系QQ: 2881505695, 2881505696

邮箱: [mlbio\\_cn@yeah.net](mailto:mlbio_cn@yeah.net)

网址: [www.mlbio.cn](http://www.mlbio.cn)