

Anti-GLYR1 antibody

Cat. No.	ml161717
Package	25 µl/100 µl/200 µl
Storage	-20°C, pH7.4 PBS, 0.05% NaN ₃ , 40% Glycerol

Product overview

Description	Anti-GLYR1 rabbit polyclonal antibody
Applications	ELISA, IHC
Immunogen	Synthetic peptide of human GLYR1
Reactivity	Human, Mouse, Rat
Content	0.7 mg/ml
Host species	Rabbit
Ig class	Immunogen-specific rabbit IgG
Purification	Antigen affinity purification

Target information

Symbol	GLYR1
Full name	glyoxylate reductase 1 homolog (Arabidopsis)
Synonyms	NP60; BM045; HIBDL; N-PAC
Swissprot	Q49A26

Target Background

GLYR1 encodes a deduced 553-amino acid protein with a molecular mass of 60.5 kD. GLYR1 contains 2 nuclear localization signals, an N-terminal PWWP domain and an AT-hook, and a C-terminal NAD-binding domain. Western blot, RT-PCR, and immunohistochemistry showed that GLYR1 localizes to the nucleus in a variety of cell lines, with robust expression in mouse macrophage RAW274.7 cells.

订购热线: 4008-898-798

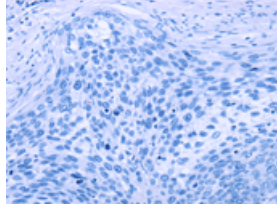
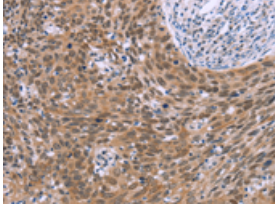
Applications

Immunohistochemistry

Predicted cell location: Nucleus

Positive control: Human cervical cancer

Recommended dilution: 50-200

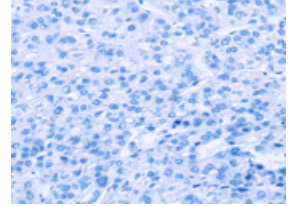
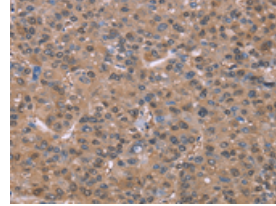


The image on the left is immunohistochemistry of paraffin-embedded Human cervical cancer tissue using ml161717(GLYR1 Antibody) at dilution 1/30, on the right is treated with synthetic peptide. (Original magnification: ×200)

Predicted cell location: Nucleus

Positive control: Human liver cancer

Recommended dilution: 50-200



The image on the left is immunohistochemistry of paraffin-embedded Human liver cancer tissue using ml161717(GLYR1 Antibody) at dilution 1/30, on the right is treated with synthetic peptide. (Original magnification: ×200)

ELISA

Recommended dilution: 2000-5000

联系电话: 4008-898-798, 021-61725725

联系QQ: 2881505695, 2881505696

邮箱: mlbio_cn@yeah.net

网址: www.mlbio.cn