

## Anti-GPR124 antibody

<b>Cat. No.</b>	ml161723
<b>Package</b>	25 µl/100 µl/200 µl
<b>Storage</b>	-20°C, pH7.4 PBS, 0.05% NaN <sub>3</sub> , 40% Glycerol

### Product overview

<b>Description</b>	Anti-GPR124 rabbit polyclonal antibody
<b>Applications</b>	ELISA, IHC
<b>Immunogen</b>	Synthetic peptide of human GPR124
<b>Reactivity</b>	Human, Mouse
<b>Content</b>	0.4 mg/ml
<b>Host species</b>	Rabbit
<b>Ig class</b>	Immunogen-specific rabbit IgG
<b>Purification</b>	Antigen affinity purification

### Target information

<b>Symbol</b>	GPR124
<b>Full name</b>	G protein-coupled receptor 124
<b>Synonyms</b>	TEM5
<b>Swissprot</b>	Q96PE1

### Target Background

Tumor endothelial markers (TEMs) are abundantly expressed in the blood vessels of human solid tumors during angiogenesis and neoangiogenesis. These include TEM1 (endosialin), TEM5 (G-protein coupled receptor 124) and TEM7 (plexin domain containing 1). TEMs are associated with the cell surface membrane at low levels in normal human and mouse tissues. TEM5 is a seven-pass transmembrane receptor, whereas TEM1, TEM7 and TEM8 span the membrane once. TEM5 expression is elevated during tumor angiogenesis and neoangiogenesis. TEM7 is highly expressed in tumor endothelium and neurons. Therefore, TEM5 and TEM7 may be suitable targets for the development of antiangiogenic therapies.

订购热线: 4008-898-798

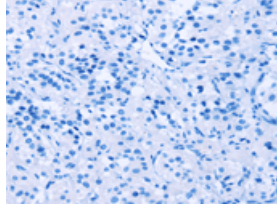
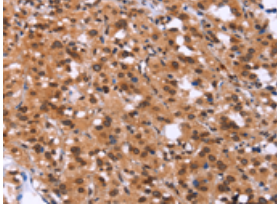
### Applications

#### Immunohistochemistry

Predicted cell location: Cytoplasm

Positive control: Human thyroid cancer

Recommended dilution: 50-200

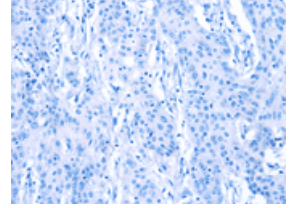
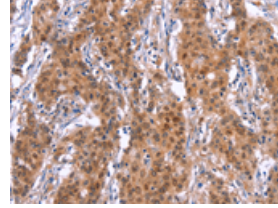


The image on the left is immunohistochemistry of paraffin-embedded Human thyroid cancer tissue using ml161723(GPR124 Antibody) at dilution 1/40, on the right is treated with synthetic peptide. (Original magnification:  $\times 200$ )

Predicted cell location: Cytoplasm

Positive control: Human gastric cancer

Recommended dilution: 50-200



The image on the left is immunohistochemistry of paraffin-embedded Human gastric cancer tissue using ml161723(GPR124 Antibody) at dilution 1/40, on the right is treated with synthetic peptide. (Original magnification:  $\times 200$ )

#### ELISA

Recommended dilution: 2000-5000

联系电话: 4008-898-798, 021-61725725

联系QQ: 2881505695, 2881505696

邮箱: [mlbio\\_cn@yeah.net](mailto:mlbio_cn@yeah.net)

网址: [www.mlbio.cn](http://www.mlbio.cn)