

Anti-HRASLS2 antibody

| | |
|-----------------|---|
| Cat. No. | ml161756 |
| Package | 25 µl/100 µl/200 µl |
| Storage | -20°C, pH7.4 PBS, 0.05% NaN ₃ , 40% Glycerol |

Product overview

| | |
|---------------------|---|
| Description | Anti-HRASLS2 rabbit polyclonal antibody |
| Applications | ELISA, IHC |
| Immunogen | Synthetic peptide of human HRASLS2 |
| Reactivity | Human |
| Content | 0.5 mg/ml |
| Host species | Rabbit |
| Ig class | Immunogen-specific rabbit IgG |
| Purification | Antigen affinity purification |

Target information

| | |
|------------------|------------------------|
| Symbol | HRASLS2 |
| Full name | HRAS-like suppressor 2 |
| Synonyms | PLA1/2-2 |
| Swissprot | Q9NWW9 |

Target Background

HRASLS2 (HRAS-like suppressor 2), also known as PLA1/2-2, is a 162 amino acid cytoplasmic protein that belongs to the H-rev107 family. Expressed in liver, kidney, small intestine and colon, HRASLS2 exhibits PLA1/2 activity by catalyzing the calcium-independent hydrolysis of acyl groups in various phosphatidylcholines (PCs) and phosphatidylethanolamine (PE).

订购热线: 4008-898-798

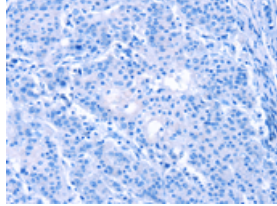
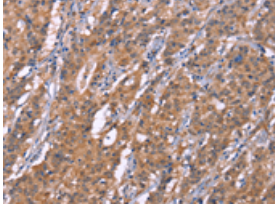
Applications

Immunohistochemistry

Predicted cell location: Cytoplasm

Positive control: Human gasrtic cancer

Recommended dilution: 50-200

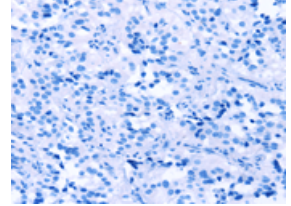
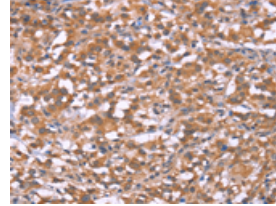


The image on the left is immunohistochemistry of paraffin-embedded Human gasrtic cancer tissue using ml161756(HRASLS2 Antibody) at dilution 1/20, on the right is treated with synthetic peptide. (Original magnification: ×200)

Predicted cell location: Cytoplasm

Positive control: Human thyroid cancer

Recommended dilution: 50-200



The image on the left is immunohistochemistry of paraffin-embedded Human thyroid cancer tissue using ml161756(HRASLS2 Antibody) at dilution 1/20, on the right is treated with synthetic peptide. (Original magnification: ×200)

ELISA

Recommended dilution: 2000-5000

联系电话: 4008-898-798, 021-61725725

联系QQ: 2881505695, 2881505696

邮箱: mlbio_cn@yeah.net

网址: www.mlbio.cn