

Anti-JAG1 antibody

| | |
|-----------------|---|
| Cat. No. | ml161806 |
| Package | 25 µl/100 µl/200 µl |
| Storage | -20°C, pH7.4 PBS, 0.05% NaN ₃ , 40% Glycerol |

Product overview

| | |
|---------------------|--------------------------------------|
| Description | Anti-JAG1 rabbit polyclonal antibody |
| Applications | ELISA, IHC |
| Immunogen | Synthetic peptide of human JAG1 |
| Reactivity | Human, Mouse, Rat |
| Content | 0.1 mg/ml |
| Host species | Rabbit |
| Ig class | Immunogen-specific rabbit IgG |
| Purification | Antigen affinity purification |

Target information

| | |
|------------------|----------------------------------|
| Symbol | JAG1 |
| Full name | jagged 1 |
| Synonyms | AGS; AHD; AWS; HJ1; CD339; JAGL1 |
| Swissprot | P78504 |

Target Background

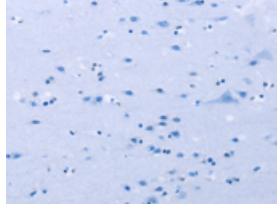
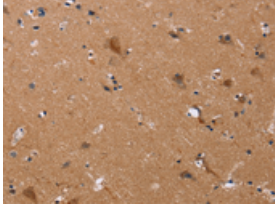
The jagged 1 protein encoded by JAG1 is the human homolog of the Drosophila jagged protein. Human jagged 1 is the ligand for the receptor notch 1, the latter a human homolog of the Drosophila jagged receptor notch. Mutations that alter the jagged 1 protein cause Alagille syndrome. Jagged 1 signalling through notch 1 has also been shown to play a role in hematopoiesis.

订购热线: 4008-898-798

Applications

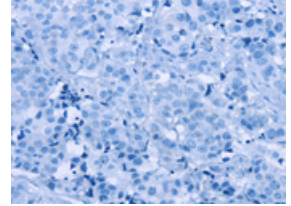
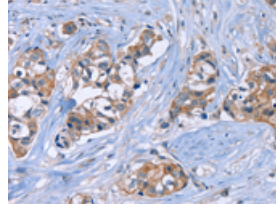
Immunohistochemistry

Predicted cell location: Cytoplasm
Positive control: Human brain
Recommended dilution: 25-100



The image on the left is immunohistochemistry of paraffin-embedded Human brain tissue using ml161806(JAG1 Antibody) at dilution 1/20, on the right is treated with synthetic peptide. (Original magnification: ×200)

Predicted cell location: Cytoplasm
Positive control: Human breast cancer
Recommended dilution: 25-100



The image on the left is immunohistochemistry of paraffin-embedded Human breast cancer tissue using ml161806(JAG1 Antibody) at dilution 1/20, on the right is treated with synthetic peptide. (Original magnification: ×200)

ELISA

Recommended dilution: 1000-2000

联系电话: 4008-898-798, 021-61725725

联系QQ: 2881505695, 2881505696

邮箱: mlbio_cn@yeah.net

网址: www.mlbio.cn