

Anti-LLGL1 antibody

Cat. No.	ml161861
Package	25 µl/100 µl/200 µl
Storage	-20°C, pH7.4 PBS, 0.05% NaN ₃ , 40% Glycerol

Product overview

Description	Anti-LLGL1 rabbit polyclonal antibody
Applications	ELISA, IHC
Immunogen	Synthetic peptide of human LLGL1
Reactivity	Human
Content	1 mg/ml
Host species	Rabbit
Ig class	Immunogen-specific rabbit IgG
Purification	Antigen affinity purification

Target information

Symbol	LLGL1
Full name	lethal giant larvae homolog 1
Synonyms	DLG4; HUGL; LLGL; HUGL1; HUGL-1
Swissprot	Q15334

Target Background

This gene encodes a protein that is similar to a tumor suppressor in *Drosophila*. The protein is part of a cytoskeletal network and is associated with nonmuscle myosin II heavy chain and a kinase that specifically phosphorylates this protein at serine residues. The gene is located within the Smith-Magenis syndrome region on chromosome 17.

订购热线: 4008-898-798

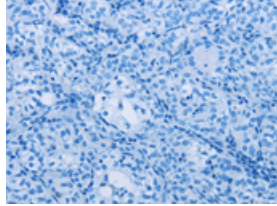
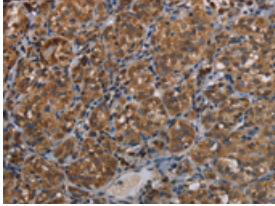
Applications

Immunohistochemistry

Predicted cell location: Cytoplasm

Positive control: Human thyroid cancer

Recommended dilution: 50-200

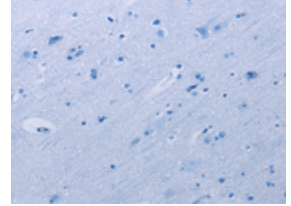
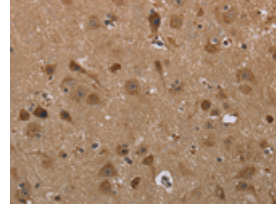


The image on the left is immunohistochemistry of paraffin-embedded Human thyroid cancer tissue using ml161861(LLGL1 Antibody) at dilution 1/40, on the right is treated with synthetic peptide. (Original magnification: ×200)

Predicted cell location: Cytoplasm

Positive control: Human brain

Recommended dilution: 50-200



The image on the left is immunohistochemistry of paraffin-embedded Human brain tissue using ml161861(LLGL1 Antibody) at dilution 1/40, on the right is treated with synthetic peptide. (Original magnification: ×200)

ELISA

Recommended dilution: 2000-5000

联系电话: 4008-898-798, 021-61725725

联系QQ: 2881505695, 2881505696

邮箱: mlbio_cn@yeah.net

网址: www.mlbio.cn