

Anti-MAGEL2 antibody

Cat. No.	ml161884
Package	25 µl/100 µl/200 µl
Storage	-20°C, pH7.4 PBS, 0.05% NaN ₃ , 40% Glycerol

Product overview

Description	Anti-MAGEL2 rabbit polyclonal antibody
Applications	ELISA, IHC
Immunogen	Synthetic peptide of human MAGEL2
Reactivity	Human
Content	0.8 mg/ml
Host species	Rabbit
Ig class	Immunogen-specific rabbit IgG
Purification	Antigen affinity purification

Target information

Symbol	MAGEL2
Full name	MAGE-like 2
Synonyms	PWLS; nM15; NDNL1
Swissprot	Q9UJ55

Target Background

Prader-Willi syndrome (PWS) is caused by the loss of expression of imprinted genes in chromosome 15q11-q13 region. Affected individuals exhibit neonatal hypotonia, developmental delay, and childhood-onset obesity. Necdin (NDN), a gene involved in the terminal differentiation of neurons, localizes to this region of the genome and has been implicated as one of the genes responsible for the etiology of PWS. This gene is structurally similar to NDN, is also localized to the PWS chromosomal region, and is paternally imprinted, suggesting a possible role for it in PWS.

订购热线: 4008-898-798

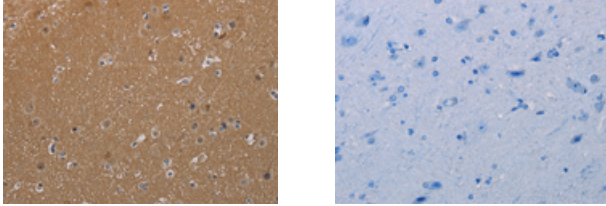
Applications

Immunohistochemistry

Predicted cell location: Cytoplasm and Nucleus

Positive control: Human brain

Recommended dilution: 50-200



The image on the left is immunohistochemistry of paraffin-embedded Human brain tissue using ml161884(MAGEL2 Antibody) at dilution 1/40, on the right is treated with synthetic peptide. (Original magnification: $\times 200$)

ELISA

Recommended dilution: 2000-5000

联系电话: 4008-898-798, 021-61725725

联系QQ: 2881505695, 2881505696

邮箱: mlbio_cn@yeah.net

网址: www.mlbio.cn