

## Anti-MTSS1 antibody

<b>Cat. No.</b>	ml161929
<b>Package</b>	25 µl/100 µl/200 µl
<b>Storage</b>	-20°C, pH7.4 PBS, 0.05% NaN <sub>3</sub> , 40% Glycerol

### Product overview

<b>Description</b>	Anti-MTSS1 rabbit polyclonal antibody
<b>Applications</b>	ELISA, IHC
<b>Immunogen</b>	Synthetic peptide of human MTSS1
<b>Reactivity</b>	Human, Mouse
<b>Content</b>	0.4 mg/ml
<b>Host species</b>	Rabbit
<b>Ig class</b>	Immunogen-specific rabbit IgG
<b>Purification</b>	Antigen affinity purification

### Target information

<b>Symbol</b>	MTSS1
<b>Full name</b>	metastasis suppressor 1
<b>Synonyms</b>	MIM; MIMA; MIMB
<b>Swissprot</b>	O43312

### Target Background

MTSS1 (metastasis suppressor 1), also known as MIM, MIMA or MIMB, is a 755 amino acid protein that contains one Actin-binding WH2 (Wiskott-Aldrich syndrome protein homology-2) domain and one IMD domain. Expressed in a variety of tissues including testis, thymus, prostate, spleen, colon, uterus and blood, MTSS1 is thought to bind to Actin and, via this binding, may affect the dynamics of the cytoskeleton. Through its association with the cytoskeleton, MTSS1 plays a role in controlling the progression and metastasis of carcinomas in various organ sites throughout the body and, when expressed at normal levels, functions as a tumor suppressor. Overexpression of MTSS1 results in the formation of abnormal actin structures, an event that may lead to tumorigenesis. Three isoforms of MTSS1 exist due to alternative splicing events.

订购热线: 4008-898-798

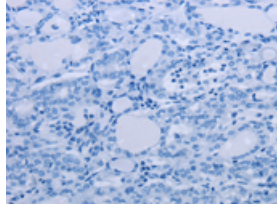
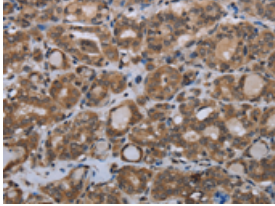
### Applications

#### Immunohistochemistry

Predicted cell location: Cytoplasm

Positive control: Human thyroid cancer

Recommended dilution: 25-100

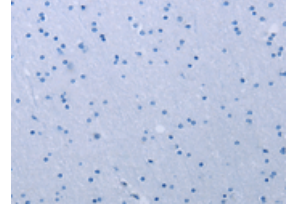
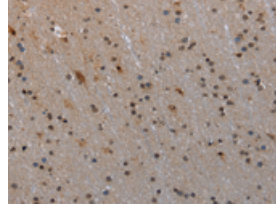


The image on the left is immunohistochemistry of paraffin-embedded Human thyroid cancer tissue using ml161929(MTSS1 Antibody) at dilution 1/20, on the right is treated with synthetic peptide. (Original magnification:  $\times 200$ )

Predicted cell location: Cytoplasm

Positive control: Human brain

Recommended dilution: 25-100



The image on the left is immunohistochemistry of paraffin-embedded Human brain tissue using ml161929(MTSS1 Antibody) at dilution 1/20, on the right is treated with synthetic peptide. (Original magnification:  $\times 200$ )

#### ELISA

Recommended dilution: 1000-2000

联系电话: 4008-898-798, 021-61725725

联系QQ: 2881505695, 2881505696

邮箱: [mlbio\\_cn@yeah.net](mailto:mlbio_cn@yeah.net)

网址: [www.mlbio.cn](http://www.mlbio.cn)