

## Anti-NDUFAB1 antibody

<b>Cat. No.</b>	ml161942
<b>Package</b>	25 µl/100 µl/200 µl
<b>Storage</b>	-20°C, pH7.4 PBS, 0.05% NaN <sub>3</sub> , 40% Glycerol

### Product overview

<b>Description</b>	Anti-NDUFAB1 rabbit polyclonal antibody
<b>Applications</b>	ELISA, IHC
<b>Immunogen</b>	Synthetic peptide of human NDUFAB1
<b>Reactivity</b>	Human, Mouse
<b>Content</b>	1.3 mg/ml
<b>Host species</b>	Rabbit
<b>Ig class</b>	Immunogen-specific rabbit IgG
<b>Purification</b>	Antigen affinity purification

### Target information

<b>Symbol</b>	NDUFAB1
<b>Full name</b>	NADH dehydrogenase (ubiquinone) 1, alpha/beta subcomplex, 1, 8kDa
<b>Synonyms</b>	ACP; SDAP; FASN2A
<b>Swissprot</b>	O14561

### Target Background

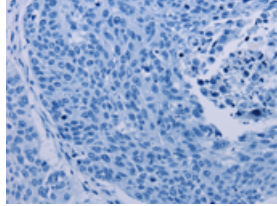
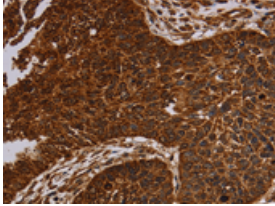
NDUFAB1 (NADH dehydrogenase (ubiquinone) 1, alpha/beta subcomplex, 1), also known as SDAP, ACP (acyl carrier protein) or FASN2A, is one of about 45 subunits comprising Complex I of the oxidative phosphorylation electron transport chain. Consisting of 156 amino acids and localizing to mitochondria, NDUFAB1 functions as an accessory subunit of the multi-protein mitochondrial membrane respiratory chain NADH dehydrogenase complex (known as Complex I). Complex I plays an important role in the transfer of electrons from NADH to the respiratory chain, a process that is essential for cellular respiration. NDUFAB1 contains one acyl carrier domain and is encoded by a gene that maps to human chromosome 16p12.2 and mouse chromosome 7 F3.

订购热线: 4008-898-798

### Applications

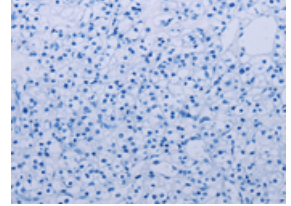
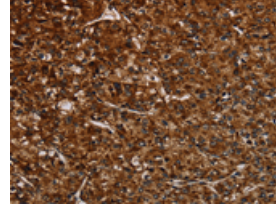
#### Immunohistochemistry

Predicted cell location: Cytoplasm and Nucleus  
Positive control: Human lung cancer  
Recommended dilution: 100-300



The image on the left is immunohistochemistry of paraffin-embedded Human lung cancer tissue using ml161942(NDUFAB1 Antibody) at dilution 1/50, on the right is treated with synthetic peptide. (Original magnification:  $\times 200$ )

Predicted cell location: Cytoplasm and Nucleus  
Positive control: Human prostate cancer  
Recommended dilution: 100-300



The image on the left is immunohistochemistry of paraffin-embedded Human prostate cancer tissue using ml161942(NDUFAB1 Antibody) at dilution 1/50, on the right is treated with synthetic peptide. (Original magnification:  $\times 200$ )

#### ELISA

Recommended dilution: 2000-10000

联系电话: 4008-898-798, 021-61725725

联系QQ: 2881505695, 2881505696

邮箱: [mlbio\\_cn@yeah.net](mailto:mlbio_cn@yeah.net)

网址: [www.mlbio.cn](http://www.mlbio.cn)