

Anti-PAGE4 antibody

Cat. No.	ml162007
Package	25 µl/100 µl/200 µl
Storage	-20°C, pH7.4 PBS, 0.05% NaN ₃ , 40% Glycerol

Product overview

Description	Anti-PAGE4 rabbit polyclonal antibody
Applications	ELISA, IHC
Immunogen	Synthetic peptide of human PAGE4
Reactivity	Human
Content	0.3 mg/ml
Host species	Rabbit
Ig class	Immunogen-specific rabbit IgG
Purification	Antigen affinity purification

Target information

Symbol	PAGE4
Full name	P antigen family, member 4
Synonyms	JM27; JM-27; CT16.7; GAGE-9; GAGEC1; PAGE-1; PAGE-4
Swissprot	O60829

Target Background

This gene is a member of the GAGE family. The GAGE genes are expressed in a variety of tumors and in some fetal and reproductive tissues. This gene is strongly expressed in prostate and prostate cancer. It is also expressed in other male and female reproductive tissues including testis, fallopian tube, uterus, and placenta, as well as in testicular cancer and uterine cancer. The protein encoded by this gene shares sequence similarity with other GAGE/PAGE proteins, and also belongs to a family of CT (cancer-testis) antigens.

订购热线: 4008-898-798

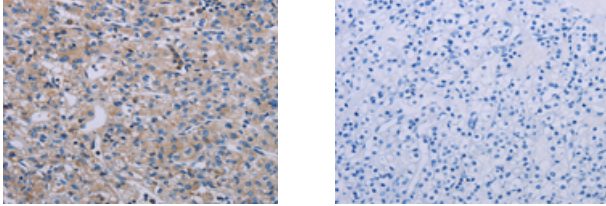
Applications

Immunohistochemistry

Predicted cell location: Cytoplasm

Positive control: Human prostate cancer

Recommended dilution: 25-100



The image on the left is immunohistochemistry of paraffin-embedded Human prostate cancer tissue using ml162007(PAGE4 Antibody) at dilution 1/40, on the right is treated with synthetic peptide. (Original magnification: $\times 200$)

ELISA

Recommended dilution: 1000-2000

联系电话: 4008-898-798, 021-61725725

联系QQ: 2881505695, 2881505696

邮箱: mlbio_cn@yeah.net

网址: www.mlbio.cn